

Tomás & The Library Lady

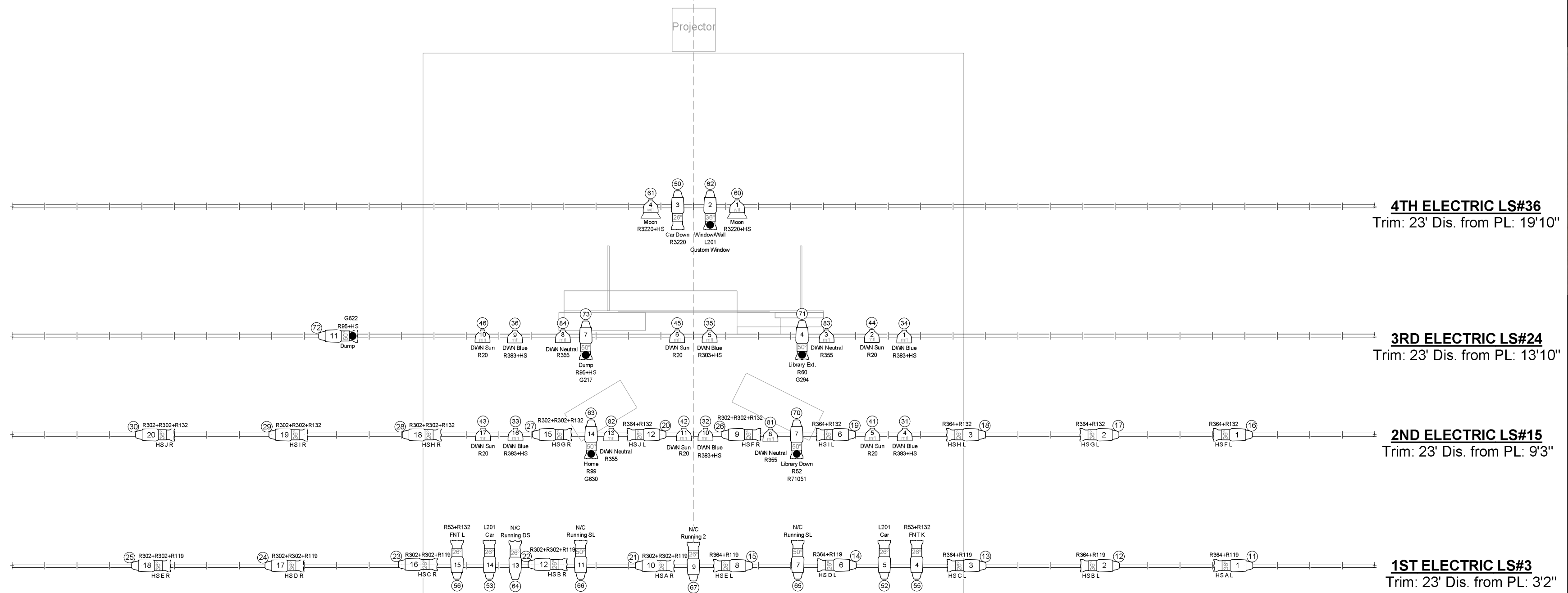
THIS DRAWING REPRESENTS VISUAL CONCEPTS AND CONSTRUCTION SUGGESTIONS ONLY. IT DOES NOT REPLACE THE KNOWLEDGE AND ADVICE OF A LICENSED STRUCTURAL ENGINEER. THE DESIGNER IS UNQUALIFIED TO DETERMINE THE STRUCTURAL APPROPRIATENESS OF THIS DESIGN AND WILL NOT ASSUME RESPONSIBILITY FOR IMPROPER ENGINEERING OR USE.

DIRECTOR: DAVID SAAR
 SCENIC DESIGN: HOLLY WINDINGSTAD
 LIGHTING DESIGN: KARA RAMLOW
 COSTUME DESIGN: HOLY WINDINGSTAD
 DRAFTED BY: KARA RAMLOW

NOTES:
 - PLEASE HAVE EXTRA CUTS OF FROST AT FOCUS

DATE: 07/14/18
 SCALE: 1/4"=1'

PLATE
1



Legend Key

Gobo 1
 Color
 Purpose

Indicates template

Unit Number

Instrument Key

- ETC Source-4 10° @ 575w
- ETC Source-4 19° @ 575w
- ETC Source 4 26° @ 575w
- ETC Source-4 36° @ 575w
- ETC Source-4 50° @ 575w
- ETC Source 4 PAR MCM (MFL) @ 575w
- ETC Source 4 PAR MCM (WFL) @ 575w
- 7.5" 4 Leaf Barn Door

