

CHILDPLAY

RESOURCES



The Big Idea:
Believe in Yourself

Based on the animated TV special

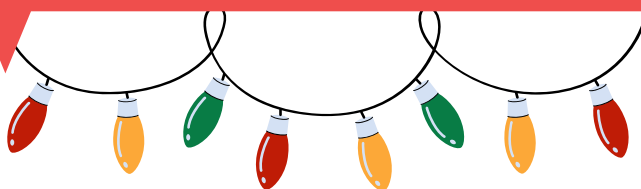
Adapted by Robert Penola

Music & Lyrics by Johnny Marks

Directed by Dwayne Hartford



Meet the Team



Cast

Rudolph	Wesley Bradstreet
Sam	Jon Gentry
Santa Claus/Misfit Toy/Elf	Beau Heckman
Hermey/Young Reindeer	Ryan Ardelt
Clarice/Misfit Toy/Elf	Alyssa Figueredo
Coach Comet/Yukon Cornelius/Elf	Katie McFadzen
Donner/Charlie-in-the-Box/Elf	Carlos Sanchez Beltran
Mrs. Donner/Boss Elf/Misfit Toy	Debra K. Stevens
Mrs. Claus/King Moonracer/Young Reindeer	Luz Navarro
Fireball/Elf/Spotted Elephant	Gavin Kennedy
Female Swing	Jena Allen
Male Swing	Jacob Currie

Creative Team

Director	Dwayne Hartford
Music Director	Bonnie Beus Romney
Choreographer	Ryan Ardelt with credits to Kat Bailes
Stage Manager	Kalie Hagen
Scenic Designer	Aaron Jackson
Costume Designer	Connie Furr
Sound Designer	Connor Adams
Prop Designer	Natalie Ward
Lighting Designer	Bret Reese
Projection Designer	Chris Ignacio

Sponsors

Field trip discounted ticket prices are underwritten by Susan Goldsmith.

What the Play is About

The holiday classic soars off the screen in this musical adaptation of the beloved television special. Filled with holiday hits like "Rudolph the Red-Nosed Reindeer" and "Holly Jolly Christmas," Rudolph The Red-Nosed Reindeer features all of your favorite characters including Santa and Mrs. Claus, Hermey the Elf, Bumble the Abominable Snow Monster, Clarice, Yukon Cornelius and, of course, Rudolph. It's an adventure that teaches us that what makes you different can be what makes you special.

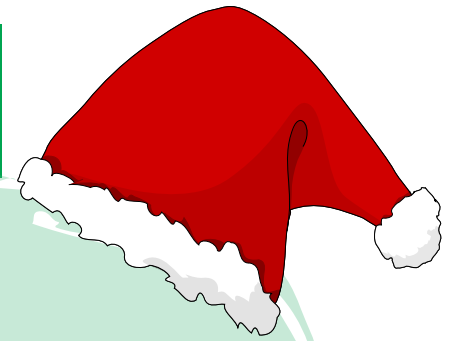


Because of his shiny nose, Rudolph doesn't feel like he belongs in Christmastown and sets off to find a place that accepts him. Along his journey, he encounters fellow misfits, only to realize that home is where he has belonged the whole time. When a storm threatens to keep Santa's sleigh from taking flight, what makes Rudolph different turns out to be what helps him save Christmas!



Themes of the Show

- Believe in Yourself
- Friendship
- Courage
- Embracing Uniqueness



Talk About It!



Start a conversation before the show:

- ★ The play is based on a popular holiday television special that has been a tradition for many families since it first came out in 1964. What are your favorite family holiday traditions?
- ★ Rudolph's red nose makes him unique. What does unique mean? What makes you unique?
- ★ The play takes place at the North Pole. What do you know about the North Pole? How do you think the designers will create the North Pole onstage?

Start a conversation after the show:

- ★ There are 10 actors in the play and many of them play at least 3 characters! What did the actors do to make their characters different from one another?
- ★ Which characters were thought of as "misfits" in the play? How did others' view of them change by the end of the play?
- ★ When the reindeer bullied Rudolph, Clarice stood up for him. Have you ever had the chance to stand up for someone else? Did you do it?

Discover It!



North Pole Fun Facts

- For 6 months of the year, the North Pole is dark, and for the other 6 months it's daylight 24/7!
- The sun rises and sets on the same day only once a year
- There is a marathon held at the North Pole every few years! Do you think you could run 26.2 miles on ice?!

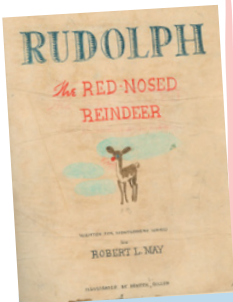
All About Reindeer

- Today, reindeer live only in the freezing northern regions of the globe, but during the Ice Age, they lived as far south as Nevada and Tennessee!
- Some reindeer have knees that make a clicking noise as they walk, allowing the herd to stay together in a blizzard.



Rudolph's Origins

- The story of Rudolph was written in 1939, way before it was made into a TV special or a theatrical musical.
- The original story and illustrations were created by Robert L. May and given as a book to children at the Montgomery Ward department store in Chicago.



Scan the QR code for resources connected to previous versions of Rudolph, including the original manuscript of Robert May's story and the history of the song that shares its name. You can also search for the animated film on YouTube!



Consider This!

Compare the other versions of Rudolph to what you saw onstage:

- What was different in the play? What stayed the same?
- What did you like about the play that wasn't in the original story?
- What was something in the original story that would have been fun to include in the play?

Create It!

Make A Snowflake!

Did you know that no two snowflakes are exactly alike? Create a snowflake that reflects your uniqueness!

What you need: ★ a square piece of paper
★ scissors

1

Fold your square paper in half diagonally, creating a triangle.

2

Fold your triangle in half again diagonally.

3

Fold the paper in thirds. Fold one side to the front, the other to the back.

4

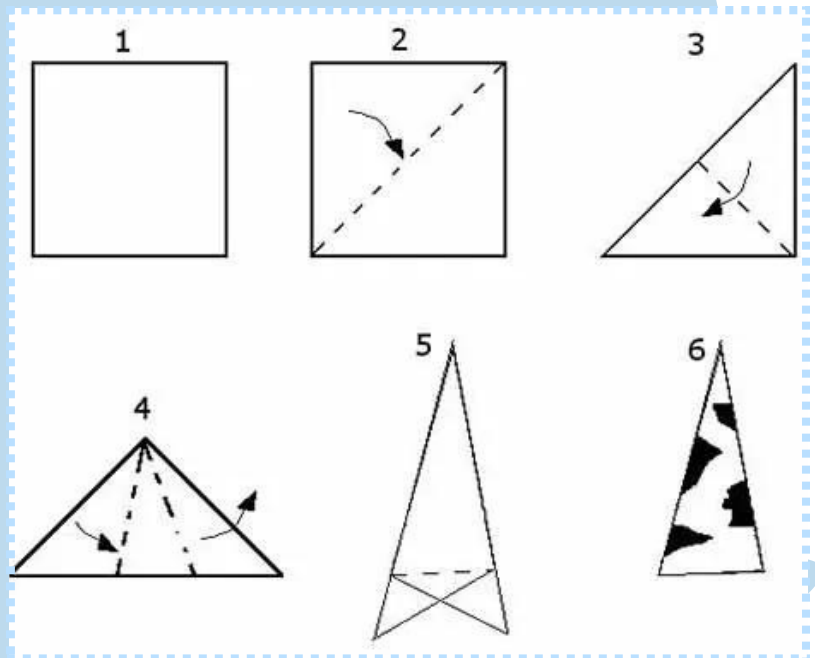
Trim the extra piece of paper off the end of the small triangle.

5

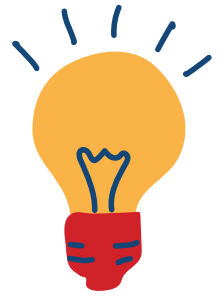
Cut some designs like circles, squares, triangles, or squiggles around the outside of your triangle.

6

Unfold your paper and see your one-of-a-kind snowflake!



Imagine It!



Toy Machine

The elves in Santa's workshop loved to make toys. In this game, you get to help by building a toy-making machine in Santa's workshop!

1

One student starts with a movement that is simple and repeatable, and produces an accompanying sound.

2

Once another student has an idea for how to connect to the movement and sound, they can join the machine, adding a unique movement and sound to represent the way their part works.

3

Continue adding on to the machine. Students must physically connect with another student to become a part of the machine, though they do not need to add on to the last person to join - their part can connect wherever it fits best.

4

Continue this until the whole group has joined, creating one whole machine.

Teacher Tip:

If you have a large group, start by building one machine as a whole group to ensure that everyone understands the task, then divide into smaller groups. Encourage your groups to observe and discuss each other's machines e.g. "What do you think this machine makes?" "What might this part of the machine do?" "What makes you think that?"



Share It!



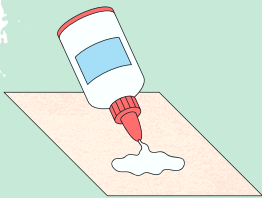
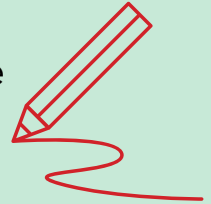
In Your Dreams

Dreams don't just happen when we sleep; there are day dreams and life dreams too. In the play, Hermey the Elf dreams of being a dentist. Rudolph dreams of pulling Santa's sleigh. What are your dreams?

**DREAM
BIG**

Think about a dream you have for your future. Maybe it's something you'd like to learn, or something you'd like to accomplish, or somewhere you'd like to go. Now find a way to express that artistically! You might...

Draw a picture - grab some paper and colored pencils or markers, and draw yourself into the future you'd like to see! Be sure to show on the body and face of "dream you" how it feels to accomplish your dreams.



Create a collage - gather a stack of magazines, newspapers, and photos, and cut out words and images that represent your dreams for your life. Paste them on a sheet of paper or even a canvas, arranging them in whatever way speaks to you. You can even add small objects or craft items like sequins or puff balls to make your collage 3D!

Write a poem - it can be rhyming or non-rhyming. It can follow a specific style (like a haiku or a sonnet), or be freeform. It can speak about your dreams literally or use images and emotions. Just pick up your pencil and begin!



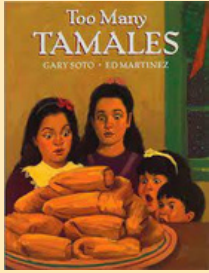
SHARE



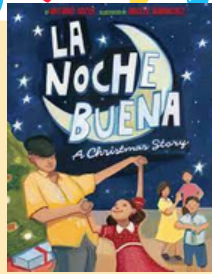
Sharing your dreams is a great first step towards making them happen. Hang your creations around the classroom or present them to each other out loud!

Read About It!

Keep the conversation going! Check out this list of books connected to the ideas and themes in 'Rudolph the Red-Nosed Reindeer'!



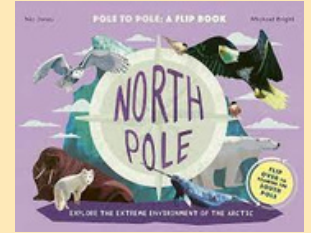
Too Many Tamales
By Gary Soto
Ages 4-8



La Noche Buena: A Christmas Story
By Antonio Sacre
Ages 4-8



The Christmas Coat: Memories of My Sioux Childhood
By Virginia Driving Hawk Sneve
Ages 5-10



North Pole/South Pole
By Michael Bright
Ages 7-11



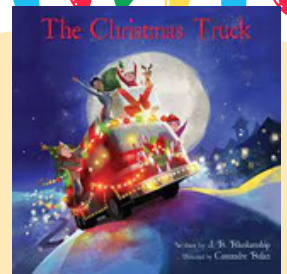
I Got the Christmas Spirit
By Connie Schofield-Morrison
Ages 3-8



Welcome Comfort
By Patricia Polacco
Ages 4-10



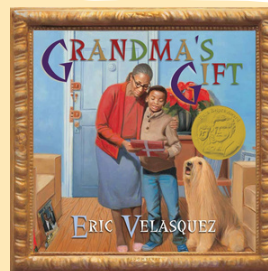
December's Gift
By Ashley Smith-Santos & Stasie Bitton
Ages 5-10



The Christmas Truck
By J.B. Blankenship
Ages 4-8



Coyote Christmas: A Lakota Story
By S.D. Nelson
Ages 6-10



Grandma's Gift
By Eric Velasquez
Ages 4-10



Extend It!



The play is just the beginning - there's always more to learn. Scan the QR code or [click here](#) to dig deeper into what interests you!

- ★ Explore the North Pole!
- ★ Chew on fun facts about teeth!
- ★ Dig into facts about snow!
- ★ Discover more about reindeer!



Extend the Experience!

Bring a professional Teaching Artist to your classroom to lead an arts-based, standards-driven lesson connected to the play.

Email us at:

CPEducation@childsplayaz.org

#SHAREWITHUS

Follow us on social media and share your comments & photos!

#ChildsplayAZ

#RudolphTheRedNosedReindeer

We also love getting mail!

Childsplay Theatre
Education Team
900 S. Mitchell Drive
Tempe, AZ 85281

About Childsplay

Our mission is to ignite imagination, wonder and joy by creating strikingly original theatre and learning experiences that inspire young minds to explore and soar.

For more information:

childsplayaz.org



ChildsplayAZ



childsplayaz



@childsplayaz