



Childsplay's
360° Theatre Resources for Schools



Based on the books by Barnard Waber
Adapted by Kevin Kling
Music by Richard Gray

Directed by **Dwayne Hartford**

Musical Direction by **Alan Ruch**

Choreography by **Michael Barnard**

Scenic Design by **Aaron Jackson**

Costume Design by **Kish Finnegan**

Lighting Design by **Jennifer Setlow**

Sound Design by **Christopher Neumeyer**

Stage Manager: **Samantha Monson**

The Cast

Lyle. Adam Hostler
Hector B. Valenti. D. Scott Withers
Joshua. Colin Ross
Mr. Primm. John Moum
Mrs. Primm. Kim Manning
Mr. Grumps. Jon Gentry
Ms. Nitpicker. Katie McFaden
Ensemble. Eric Boudreau
Ensemble. Christiann Thijm

November 19– December 24, 2011
Tempe Center for the Arts

Recommended for ages 4 and older
www.childsplayaz.org

About *Lyle the Crocodile* and Your Theatre Experience

BROUGHT TO YOU BY



U-S AIRWAYS

**WHERE EDUCATION AND IMAGINATION
TAKE FLIGHT**

The Story:

Hector P. Valenti, star of stage and screen, and his caviar eating, lovable crocodile, Lyle, have performed in the palaces of kings and the haylofts of farmers. But times are tough and Hector needs to find a temporary home for Lyle. The new apartment of the Primm family on East 88th Street in New York City seems to be the perfect fit.

When Joshua Primm finds Lyle sleeping in their bathtub, Mr. and Mrs. Primm are understandably concerned. Lyle soon wins them over, though, with his dancing, tricks and winning ways. He even impresses their uptight neighbor, Ms. Nitpicker. Mr. Grumps from downstairs is another story, however. He doesn't seem to like anyone.

After a day of fun and frolicking in the city with Joshua and his friends, Lyle is accused of scaring Mr. Grumps' beloved cat and the old man warns the Primms that he will not stand for any more problems with the reptile. Unfortunately, Lyle causes a commotion when he and Hector try to revive their song and dance career at Mr. Grump's department store and Lyle is sent to the zoo.

The other crocodiles are friendly but Lyle is far too talented to be in a cage so Hector breaks him out. They return to East 88th Street to say goodbye to the Primms and discover Mr. Grump's apartment is on fire with the old man and his cat still inside. Lyle saves the day and turns Mr. Grump's attitude around - just another "typical New York day."

Themes/Curricular Ties:

New York City * Page to Stage * 1960s * Unlikely Friendships * Crocodiles * Zoos * Neighbors * Music *
Courage * Kindness * Tolerance *
Embracing Differences



About Childsplay:

Childsplay is a professional non-profit theatre company of adult actors, performing for young audiences and families.

Our Mission is to create theatre so strikingly original in form, content or both, that it instills in young people an enduring awe, love and respect for the medium, thus preserving imagination and wonder, those hallmarks of childhood that are the keys to the future.

What We Do:

In addition to our weekend public performances, we also offer three theatre experiences for our school audiences: Field Trips, School Tours and Artist in Residence Programs. Field trip performances, where students come to the theater and see a production, can be booked by contacting Beth Olson at 480-921-5757. School Tour Performances, where we come to your school or other location and perform, can be booked by contacting Jaime Fox at 480-921-5751. Artist in Residence Programs, which can be individually designed to meet the needs of your school or can be based on one of our many existing formats (page to stage, creating original work, use of drama to teach curriculum, professional development for teachers), can be booked by contacting Patricia Black at 480-921-5750.



Our Home:

The Sybil B. Harrington Campus of Imagination and Wonder at Mitchell Park (formerly Mitchell School) is where you'll find our administrative offices, costume shop, prop shop, rehearsal spaces, and Academy classrooms. We love to hear from our audiences. Send your letters and reviews to:

Address: 900 S. Mitchell, Tempe, AZ 85281

Phone: 480-921-5700

Email: info@childsplayaz.org **Web:** www.childsplayaz.org

Facebook: www.facebook.com/childsplayaz

To help enrich and extend your theatre experience, check out the 360° Theatre Resource Center on our website!

We perform at the Tempe Center for the Arts
700 W. Rio Salado Parkway
Tempe, AZ 85281

Theater Etiquette:

It's helpful to review the rules of theater etiquette before seeing a show, especially since this may be the first live theater experience for some of your students. Please take a moment to discuss the following pointers prior to seeing the performance:

- Use the restroom before seeing the show as we do not have intermission during our school performances.
- Stay seated during the performance.
- Be respectful to the performers and other people in the audience by not talking during the performance. Remember, the actors can see and hear the audience just like the audience can see and hear them.
- Appropriate responses such as applause or laughter are always welcome.
- Food, candy, gum and beverages will not be allowed in the theater/during the performance.
- Use of cell phones (including text messaging), cameras or any other recording device is not allowed in the theatre/during the performance at any time.
- Following the performance (time permitting) there will be a brief question/answer session where audience members will have an opportunity to ask the actors questions about the production.



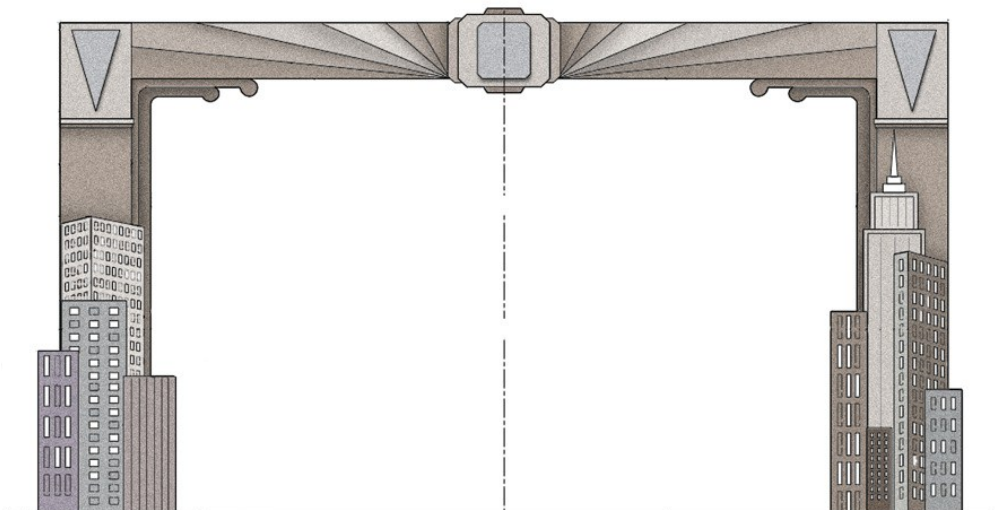
Things to Talk about *Before Seeing the Show...*

What are the differences between seeing a play and a movie? A play happens live in front of an audience. The actors need to recreate the same play over and over again giving the audience the illusion that it is the very first performance. Since theater happens live, each performance may be a little bit different than the next. When a production closes, the play is no more than a memory. In movies, a performance is captured on film, can be accessed any time and becomes a part of history.

How is a musical different than a play? A musical is a story that is told through speaking, singing and dancing. The characters sing thoughts and feelings that are too strong for words. They reveal information about themselves and others through song. Lyrics and melodies that make up songs often stay with you long after you've heard them. Can you think of a song from a movie, musical or even a commercial that has stayed stuck in your head?

Page to Stage: The musical is based on the books *Lyle, Lyle Crocodile* and *The House on East 88th Street* by Bernard Waber. Reading the books, it's hard to imagine how they could be translated to the stage because the characters appear as cartoon illustrations *and* some of them are animals. A team of designers worked with the director to create the world of the play. The play takes place in various locations around New York City in the 1960s. When you see the play, you'll notice that much of the scenery will "fly" in from above. On stage left (that would be your right if you're in the audience), there's a fly system made up of weights and ropes. Each piece of scenery that flies is attached to a large pipe (called a batten) with strong cables. The scenery is then flown in or out by a stage hand, who gets a cue from the stage manager over a headset and then pulls ropes on the fly system to raise or lower the piece. When the scenery is not being used, it hangs above the stage out of sight from the audience. To the right are two renderings from Aaron Jackson's scenic design. The piece on the bottom will frame the stage and never moves. The "SALE!" piece will fly in for the department store scene.

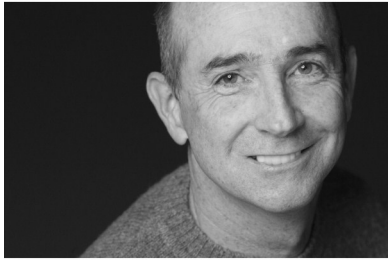
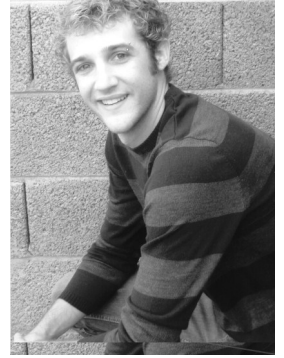
Costumes renderings of Lyle and Mrs. Primm by Kish Fin-negan.





Childsplay's 360° Theatre Resources for Schools
Who's who in
Lyle the Crocodile
2011-2012 Season
www.childsplayaz.org

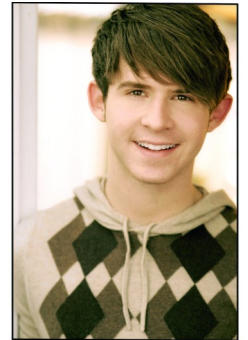
Eric Boudreau (*Ensemble*) is originally from Port Angeles, WA and is in his fourth season as a member of the Childsplay Ensemble having appeared in *Busytown*, *The Neverending Story*, *Androcles and the Lion*, and *The Imaginators*. He is also a teaching artist for the Childsplay Summer Academy and Conservatory Classes. Other valley credits include *The Quiltmaker's Gift*, *Octopus*, *Speech and Debate*, *Mr. Marmalade*, *Parade*, and Lisa Starry's *A Vampire Tale*.



Jon Gentry (*Mr. Grumps*) has been a member of Childsplay's acting company since 1982. Jon spent 6 months in Europe performing *Steen*, *Papier*, *Schaar* with Speel Theater. Childsplay shows include: Toad in *A Year with Frog and Toad* and Benjamin in *The Yellow Boat*. Other roles: Max Bialystock in *The Producers*, Tupolski in *The Pillowman*, Roy Cohn in *Angels in America, Parts One and Two*. Also, *Blue Orange*, *Compleat Wrks of Shspr (Abridged)* and *A Funny Thing Happened on the Way to the Forum*. Directing credits: *In My Grandmother's Purse*, *Stones In His Pockets*, *Belle Of Amherst*, *Rhubarb Jam*, *The Imaginators* and *Equus*. Jon was awarded a Lunt-

Fontanne Fellowship by the Ten Chimneys Foundation and was one of 10 actors in the United States to participate in the Inaugural Lunt-Fontanne Fellowship Program.

Adam Hostler (*Lyle*) is thrilled to be making his Childsplay theatre debut. He recently graduated from University of the Arts where he received his BFA in Musical Theatre. Previous roles include: Medvedenko in *Seagull*, Phil Dolan II in *On Your Toes*, and Josh Crenshaw in *Coming*. Also, he has been seen in ensembles of *Tommy* and *Follies*.



Kim Manning's (*Mrs. Primm*) career has taken her from The Ice Capades, to dance, theater, film, television and back, traveling all over the place! She lived in Spain for 24 years and some of her credits include, *The Cheetah Girls 2* (directed by Kenny Ortega), a couple hit shows on Spanish television (9 seasons each), and an invitation to perform in the Edinburgh International Festival. She was recently seen at Phoenix Theatre in *NINE* and *Charlotte's Web*. This is Kim's third season as a teaching artist with Childsplay, having taught conservatory, academy classes and residencies. She is also a founding member of Phoenix Theatre's Partners That Heal and continues there since 2008 serving the kids at Phoenix Children's Hospital and St. Vincent de Paul's.

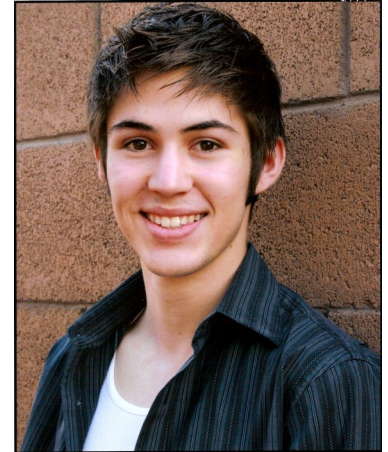
Katie McFadzen (*Ms. Nitpicker*) is an Associate Artist with Childsplay and has been with the company as an actor and teaching artist since 1993. Favorite Childsplay roles include: Bird/Mouse in *A Year With Frog and Toad*, Junie B. in *Junie B. in Jungle Bells*, *Batman Smells*, The Queen of England in *The Big Friendly Giant*, Miss Nelson/Miss Swamp in *Miss Nelson is Missing*, Mayzie in *Seussical*, Lilly in *Lilly's Purple Plastic Purse*, and Aunt Patti in *Getting Near to Baby*. Other credits include *Speech and Debate* (Stray Cat Theatre), *Little Queen* (Teatro Bravo), *The Women and Something's Afoot* (Phoenix Theatre), *The Pursuit of Happiness* and *Parallel Lives: The Kathy and Mo Show* (Actors Theatre) and *How the Other Half Loves* (Arizona Theatre Company). Katie also helps create Childsplay's 360° Resource Guides connected to the productions.





John Moun (*Mr. Primm*) is blessed to be returning for his third season at Childsplay and his first time on the mainstage after touring in *Ferdinand the Bull* (Ferdinand) and *New Kid* (Nick). John is also a teaching artist for Childsplay's Academy and Conservatory programs. Favorite Roles include: *Hair* (Ronnie), *Zanna Don't!* (Buck), *Parade* (Britt Craig), *Sweeney Todd* (Tobias), and his first role as a frog in pre-school. John will appear next in Childsplay's upcoming world premiere production of *With Two Wings*.

Colin Ross (*Joshua*) is originally from El Paso, Texas. He spent the last two summers teaching for the Academy program at Childsplay. Last year he was lucky enough to join the national tour of *Ferdinand the Bull* as Danilo. In the spring he will be in the world premiere of Childsplay's *Rock the Presidents*.



Christiann Cosler Thijm (*Ensemble*) is excited to be working with Childsplay again after taking some time off to have her first child, Ella. AZ credits: Childsplay: *A Little Bit of Water* (Marie) and *Busytown* (Grocer Cat/Nurse Raccoon) Actors Theatre: *Rabbit Hole* (Becca). Other credits include: *The Radio City Christmas Spectacular with The Rockettes* 1999-2005 (Mrs. Claus), *Godspell* (Sonia), *Working* (The Waitress), *Grease* (Marty), *Vanities* (Joanne). She has also had the pleasure of traveling the world as lead singer on various Royal Caribbean International and Holland America Line cruise ships where she shared the stage with the likes of Adam Lambert and Ben Vereen. Christiann is a graduate of The American Musical and Dramatic Academy in New York City.

am Lambert and Ben Vereen. Christiann is a graduate of The American Musical and Dramatic Academy in New York City.

D. Scott Withers (*Hector P. Valenti*) has been a member of the Childsplay acting company since 1989. Last season Scott appeared in *A Year with Frog and Toad* and *Go, Dog. Go!* for Childsplay, performed in *Footloose* for Arizona Broadway Theatre and *Hairspray* for Phoenix Theatre and Arkansas Rep and directed *The Wiz* for Greasepaint Youtheatre. Other favorite roles at Childsplay: *Seussical*, *Petite Rouge*, *A Tale of Two Cities*, *The Yellow Boat*, *Eric and Elliot*, *Schoolhouse Rock Live!*, *Wiley and the Hairy Man*, *Still Life With Iris* and *The Wind in the Willows*. Other performance credits: *Baby, Gypsy* and *Bye, Bye Birdie* (Arizona Broadway Theatre), *A Year with Frog and Toad* (Seattle Children's Theatre); *Company*, *Forum* and *Into the Woods* (Phoenix Theatre); *A Christmas Carol* (Actors Theatre); *Pageant* (Howgood Productions); and *The Jungle Book* (Fulton Opera House). Directing credits include: *Androcles and the Lion* and *Alexander and The Terrible, Horrible, No Good, Very Bad Day* at Childsplay, *The Women at Phoenix Theatre*, *The Crucible*, *Into the Woods*, *Victor/Victoria*, *Snoopy!!!*, *Annie Get Your Gun*, *Footloose* and *Once On This Island* at Stagebrush, *Jeffrey* at IMCO, *The Life* at Black Theatre Troupe, *Meet Me In St. Louis* at the Sun Dome and *The Selfish Giant* and *Christmas in the Land of Oz* at Arizona Broadway Theatre. He served as Artistic Director for Greasepaint Youtheatre where he directed *Rent: School Edition* and *Pippin* and was the founding managing director for In Mixed Company. Scott is originally from Idaho and holds a BFA in Theatre Performance from ASU.





Childsplay's 360° Theatre Resources for Schools
Pre and Post Show Discussion Questions for *Lyle the Crocodile*
2011-2012 Season
www.childsplayaz.org

Questions to Ask Before Seeing the Production:

- 1) The production is based on two books: *Lyle, Lyle Crocodile* and *The House on East 88th Street*. Which settings (places) do you think you'll see? Which characters do you think you'll see? What will Lyle look like?
- 2) *Lyle the Crocodile* is a musical. How is a musical different from a play? Which characters will sing and why do you think they will sing instead of speak?
- 3) Lyle is an unusual pet. What are some other examples of unusual pets that people have?
- 4) Zoos are wonderful places to see animals. What are some animals that live in the zoo? How is zoo life different than living in the wild?
- 5) What does it mean to be a hero? Can you give some examples of people you think are heroes?
- 6) In the play, Mr. Primm and Joshua both have to deal with a "first day." How do you feel before you do something for the first time (like the first day of school or a summer camp)?
- 7) Cities are exciting places. Have you ever been to a different city than the one you live in? What kinds of things did you see there? How was that city different from your city?

Questions to Ask After Seeing the Production:

- 1) How was the play similar to the books? How was it different? Do you remember images from the books that appeared in the play? What do you remember from the play that was not in one of the books?
- 2) Sometimes we judge people based on how they look without getting to know them. At first, the Primm family is afraid of Lyle. Why? How do they overcome their fear of Lyle? Can you think of other examples of judging someone or something before you have all of the facts?
- 3) What are some examples of kindness, heroism and good citizenship in the play?
- 4) Lyle is left in a new place and tries to belong. What is it like going to a new place? What makes you feel like you belong?
- 5) How does Lyle help the Primm family? In what ways are you helpful to your family?
- 6) Ms. Nitpicker is very nosey. When is it ok to be nosey and when is it not?
- 7) At first, Ms. Nitpicker says Lyle can't stay in the neighborhood...what happens to change her mind?
- 8) How did Lyle feel when he was taken to the zoo? Why did he feel that way?
- 9) Why is Mr. Grumps so grumpy?
- 10) Lyle is an animal who performs. What are other examples of performing animals and where would you find them?



5 Minute Activities:

1) Create a list of the many skills that Lyle has (doing chores, juggling, tap dancing, tumbling, roller skating, etc.) Working in your own space, pantomime (communication by means of gesture and facial expression) Lyle's many skills. The challenge is to use just your body and imagination and no voice.

Theatre: S1: C1: PO101: Imagine and describe characters through movement and gesture.

2) Lyle ends up spending time in the zoo. As a class, make a list of animals you might find in the zoo.

Science: Kindergarten: S1: C3: PO 1: Organize objects, organisms, and events according to various characteristics.

3) Create your own jump rope chant. Example: Chant this while jumping, "Cinderella, dressed in yellow, went outside, to play her cello, how many minutes did she take?" Then pepper (fast jumping) while counting 1, 2, 3, etc. until you miss. Jump rope for 5 minutes every day!

Physical Education: Grades K-2: S1: C1: PO 1: Demonstrate locomotor skills with age-appropriate ability.

4) Lyle doesn't speak yet we understand him through nonverbal communication. What are ways we communicate nonverbally? Raise your hand and show an example to your class.

Health: Grades 3-5: S4: C1: PO 1: Demonstrate effective verbal and nonverbal communication skills to enhance health.

15 Minute Activities:

1) In the play, Lyle becomes part of a family. All families are different. Some people have more than one family. Using paper and crayons or colored pencils, create a family portrait by drawing all of the members of your family (or families if you have more than one) including pets. Make sure you write the names of your family members and how they are related to you. Hang them in your classroom.

Visual Art: S1: C4: PO101: Select and use subject matter and/or symbols in his or her own artwork.

2) Brainstorm ideas for scenes that we don't see in the play. In groups of 2-4, play out scenes using your ideas for inspiration. Here are some examples to get you started:

-Hector's life after Lyle decides to stay with the Primm's

-At home with Mr. Grumps and Loretta

-Conflicts Josh and Lyle have sharing a room

-The Primm's hearing Lyle actually speak for the first time

Decide what happens in your scene and how it ends, rehearse them and share!

Theatre: S1: C4: PO 103: Improvise by imitating life experiences and/or knowledge of literature, and create imaginary scenes that include characters, setting, and storyline.

3) What are some of the disguises that Hector P. Valenti wears? What would your disguise be? Draw a picture of it, think of a name for the character that you would become when you wear the disguise and share with your class.

Visual Arts: S1: C4: PO 001: Describe and explain his or her own artwork.

30 Minute Activities:

1) Write a story about discovering a strange creature in your house. Where is the creature when you find it? What is it doing? What kind of creature or animal (real or not) is it? How do you feel when you see it for the first time? Do you end up keeping it? If not, how do you get it out of the house? Make sure your story has a beginning, middle and end as well as conflict and resolution.

Writing: Grade 2: S2: C1: PO2: Incorporate relevant details that give the piece interest.

2) New York City has many buildings and skyscrapers that create a wonderful skyline. Using crayons, colored pencils and construction paper create a unique city building. How many stories does it have? How many windows does it have? When was it built? Look at examples of skyscraper architecture for inspiration. Put all of the buildings together into a city. Draw Lyle in one of the windows of every building.

Social Studies: Grade 1: S4: C2: PO 1: Discuss human features (e.g., cities, parks, railroad tracks, hospitals, shops, schools) in the world.

3) Choose one of the Lyle books to dramatize in class. Read the book together as a class. After reviewing the plot, characters and conflict, assign roles and play out all or part of the story. You can also divide into smaller groups and work simultaneously on different scenes and then take turns sharing.

Theatre: S1: C4: PO 102: Retell a story including its theme, setting, storyline, plot, physical descriptions of the characters, and theme.



Childsplay's 360° Theatre Resources for Schools
Booklist and Websites for *Lyle the Crocodile*
2011-2012 Season
www.childsplayaz.org

*Prepared with the help of Tim Wadham, Member, National Board, Association for Library Service to Children

Crocodiles

The House on East 88th Street by Bernard Waber
Lyle, Lyle Crocodile by Bernard Waber
Funny, Funny Lyle by Bernard Waber
Loveable Lyle by Bernard Waber
Lyle Finds His Mother by Bernard Waber
Lyle at the Office by Bernard Waber
Lyle and the Birthday Party by Bernard Waber

Courage

Courage by Bernard Waber
Dream Big, Olivia by Ian Falconer

Tolerance

A Firefly Named Torch by Bernard Waber
Spork by Kyo Maclear

Neighbors

The Mouse that Snored by Bernard Waber
Nice New Neighbors by Franz Brandenburg
Zen Ties by Jon J. Muth
Mr. Putter and Tabby series by Cynthia Rylant

Music

Punk Farm On Tour by Jarrett Krosoczka
Berlioz the Bear by Jan Brett
Ben's Trumpet by Rachel Isadora
The Jazz Fly by Matthew Gollub

Zoos

A Lion Named Shirley Williamson by Bernard Waber
Goodnight, Gorilla by Peggy Rathman
If I Ran the Zoo by Dr. Seuss

Interesting Internet Links:

www.houghtonmifflinbooks.com/authors/waber/funwithlyle.shtml

-great links to games and puzzle

www.houghtonmifflinbooks.com/authors/waber/index.shtml

-about author Bernard Waber

www.kishfinnegan.com

-click on *Lyle the Crocodile* to see costume renderings

www.crocsite.com/crocsite-articles/crocodile-facts.htm

-wonderful information on all things crocodiles

www.nycgo.com

-The official guide to the Big Apple

www.nyctourist.com/rock_center1.htm

-About Rockefeller Center

www.phoenixzoo.org

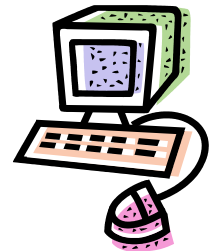
-Our own zoo

www.centralparkzoo.com

-NYC's Central Park Zoo

www.factmonster.com/spot/skyscraperhistory.html

-History of skyscrapers



Kindness

Because of You by B. G. Hennessy
Andy and the Lion by James Daugherty
Kermit the Hermit by Bill Peet
The Lion and the Mouse by Jerry Pinkney

Embracing Differences

You Look Ridiculous Said the Rhinoceros to the Hippopotamus by Bernard Waber
Poodle and Hound by Kathryn Lasky
Grumblebunny by Bob Hartman

New York City

You Can't Take a Balloon into the Metropolitan Museum by Jacqueline Preiss Weitzman
Madlenka by Peter Sis
Eloise by Kay Thompson
Subway by Christoph Niemann



Childsplay's 360° Theatre Resources
for Schools
Student Pages for:



Based on the books by **Barnard Waber**
Adapted by **Kevin Kling**
Music by **Richard Gray**

Directed by **Dwayne Hartford**
Musical Direction by **Alan Ruch**
Choreography by **Michael Barnard**
Scenic Design by **Aaron Jackson**
Costume Design by **Kish Finnegan**
Lighting Design by **Jennifer Setlow**
Sound Design by **Chris Neumeyer**
Stage Manager: **Samantha Monson**

The Cast

Lyle. Adam Hostler
Hector B. Valenti. D. Scott Withers
Joshua. Colin Ross
Mr. Primm. John Moum
Mrs. Primm. Kim Manning
Mr. Grumps. Jon Gentry
Ms. Nitpicker. Katie McFadzen
Ensemble. Eric Boudreau
Ensemble. Christiann Thijm

November 19– December 24, 2011
Tempe Center for the Arts

Recommended for ages 4 and older

www.childsplayaz.org

Today you saw a production of *Lyle the Crocodile*, performed by Childsplay. Here are some things to think about and some activities to do now that you've seen the show!

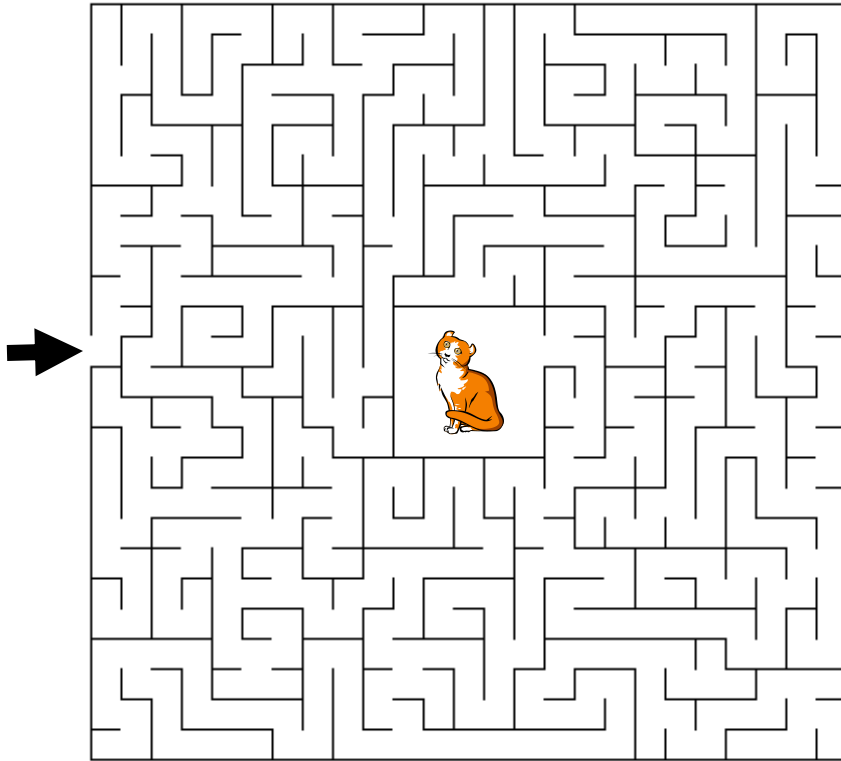
Tell your family and/or friends about the play:

- The play was performed at the Tempe Center for the Arts. Describe the building. What were three cool things you can remember about the building? For more information on the TCA, go to: www.tempe.gov/tca.
- Who were the characters? Which character was your favorite and why? What did the characters do? Was there a character that you disliked? Why? What was your favorite part of the play?
- Talk about the costumes, scenery, props, music and sound effects that were used in the production.
- Draw pictures to help describe the different costumes and scenery. What was your favorite costume? What was one thing about the scenery that you found interesting?
- The play is based on *Lyle, Lyle Crocodile* and *The House on East 88th Street* by Bernard Waber. You can check them out in the library or buy them in a bookstore. Read (or re-read) them. How is the play similar to the books? How is it different?
- How does Lyle help the Primm family? List the ways that you are helpful to your family:

- 1) _____
- 2) _____
- 3) _____
- 4) _____
- 5) _____

We love to hear from our audiences. Send your letters, comments or reviews to:
Childsplay, 900 S. Mitchell, Tempe, AZ 85281 or
email to info@childsplayaz.org

Answers to Fill in the Blank:
(1) disguises
(2) Loreta
(3) Mr. Grumps
(4) Stomp
(5) zoo, crocodiles
(6) bathub
(7) pajamas
(8) 88th



Follow the maze to find Loretta the cat!

WORD SEARCH: Find and circle the following words in the puzzle below. Words can go up, down, diagonally or backwards. Cross the words out as you find them.

CAT	CITY	CROCODILE
FAMILY	FRIEND	LYLE
MUSICAL	SKATE	STORE

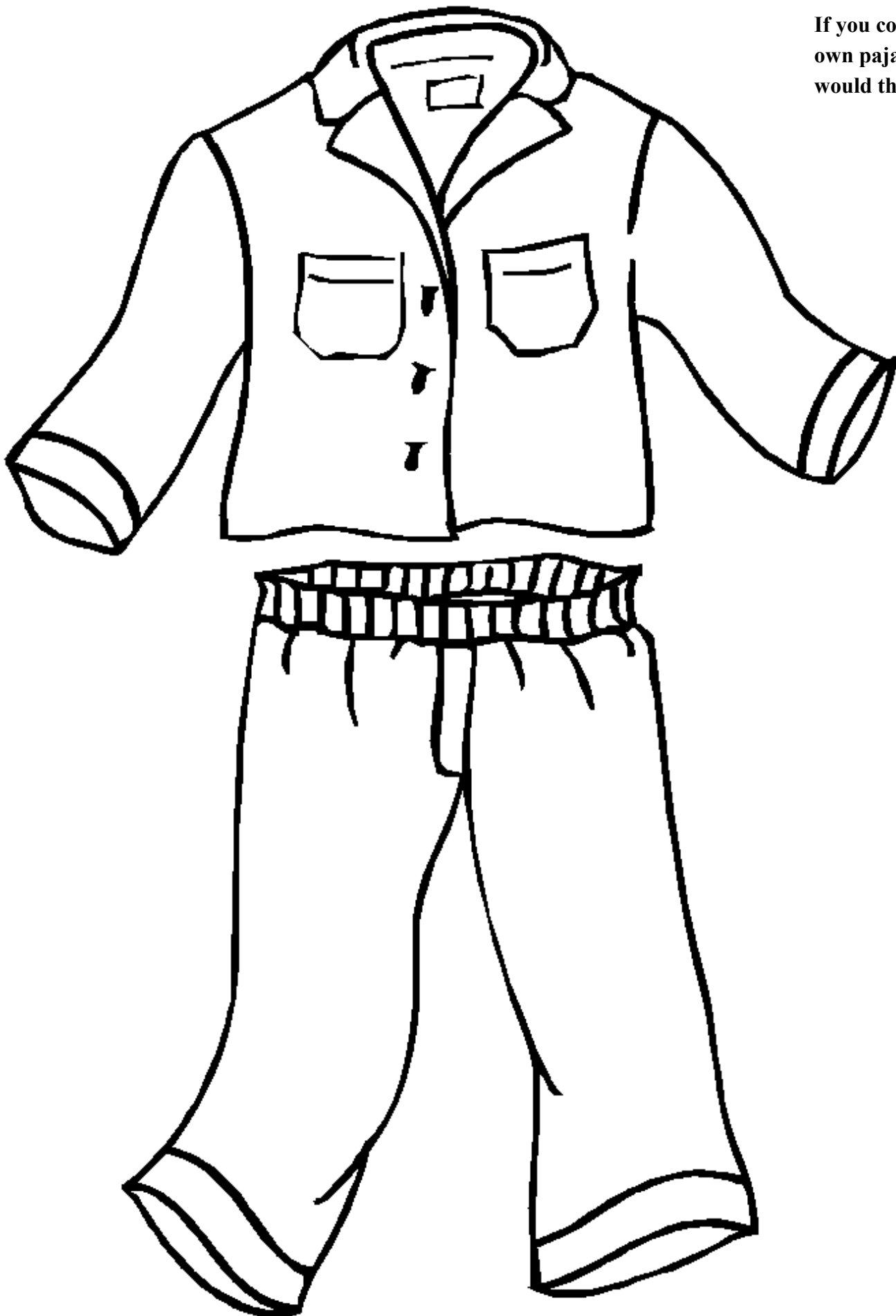


Fill in the blanks in the sentences below:

- 1) Hector P. Valenti likes to wear _____ to change his appearance.
- 2) Mr. Grumps' cat's name is _____.
- 3) _____' apartment starts on fire.
- 4) The dance that Hector and Lyle do is called the Swampity _____.
- 5) Lyle has to spend the night in the _____ with the other
_____.
- 6) The Primms find Lyle in the _____.
- 7) The department store has a sale on _____.
- 8) The Primms live on East _____ Street.



If you could design your
own pajamas, what
would they look like?



Color me!

