

**CHILDSPLAY THEATRE PRESENTS**



**Book by:**

Scott Ferguson, George Keating and Kyle Hall

**Music and Lyrics by:**

Lynn Ahrens, Bob Dorough, Dave Frishberg,  
Kathy Mandry, George Newall and Tom Yohe

**Directed by:** Anthony Runfola

**Choreographer:** Molly Lajoie

**Original Choreography staged by:** Kat Bailes

**Music Director:** Dr. Randi Rudolph

**Costume Design:** Daniel Hollingshead

**Lighting Design:** Tim Monson

**Projection Design:** Adam Benavides

**Scenic Designer:** Holly Windingstad

**Sound Design:** Chris Neumeyer

**Stage Manager:** Ryan Clark

**APRIL 23 – MAY 22, 2022**

**Herberger Theater Center–Stage West**

*Season Sponsor*

*Billie Jo & Judd*  
**HERBERGER**

*Storybook Preview Sponsor*



*Production Sponsor*



**Running Time: 70 MINUTES**

# Welcome!



## **Dear Childsplay Friends,**

It is so wonderful to see you! When the world came to a stop in March 2020, most of us thought we would be back to “normal” in a matter of weeks, or at most a few months. Little did we know what the pandemic and world events had in store. There has been so much suffering and loss, including within our own families. To those who have experienced loss, we offer our deepest sympathies.

Theatre is by its definition a communal and collaborative art form. It pained us not to be able to gather in one place with you to celebrate imagination and wonder, as we have done since 1977. But, the thoughtful and creative people at Childsplay didn't let a global pandemic stop us from pursuing our mission.

When theaters closed, we explored different ways to share stories with you. We created digital content for families and schools, our Academy and residency programs went virtual, and we learned how to teach drama classes over Zoom. We also developed ways to engage families with YouTube videos featuring stories, games, and activities.

More than 45,000 students enjoyed our virtual field trips over the 20/21 school year. We created and filmed four one-person plays, which we offered online to schools at no cost. In partnership with the Maricopa County Library District, we also offered these plays as a series of live drive-in performances at their library parking lots, where families could watch from the safety of their automobiles. Finally, with strict safety protocols and a dose of creativity, we produced *A Christmas Carol* at the Herberger Theater Center's temporary outdoor stage.

Now we are back inside the theater, and you are here with us. We don't take either of those two facts lightly. Thank you for trusting us to provide strikingly original theatre for your family in an environment that is safe for all involved. Together we will get the COVID-19 pandemic behind us and move onto a brave new future.

*Schoolhouse Rock Live!*, along with many other productions you will see in the coming years, are all part of our commitment to children—to their stories, their lives, their concerns, and their dreams. Thanks to your support, Childsplay will be here, nurturing and preserving imagination and wonder when this global pandemic is a distant memory.

With gratitude,

**Dwayne Hartford**, *Artistic Director*  
**Steve Martin**, *Managing Director*  
**Matthew Benjamin**, *President, Board of Trustees*

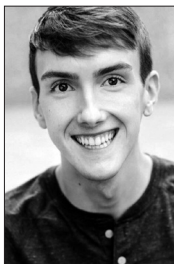
*Childsplay acknowledges that modern-day Phoenix, including the Herberger Theater Center, sits on the traditional lands of the Akimel O’odham (Pima) and the Tohono O’odham and before that their ancestors (Hohokam) as well as the Pee-Posh (Maricopa). This place where we live and work has been and continues to be the home of indigenous peoples since time immemorial. Our desert metropolis exists today thanks to the ingenuity of these people in creating a vast system of irrigation canals.*

## THE CAST

*Shulie* ..... Alyssa Armstrong  
*Tom* ..... Ian Eller  
*Dina* ..... Cadence Lamb  
*George* ..... Joshua Vern



**Alyssa Armstrong (*Shulie*)** (she/her) is thrilled to be having her Childsplay debut as Shulie in SHRL! She has been performing around the AZ Valley for a little over 10 years. Previous credits: *Pippin* (National Youth Award-Best supporting actress) *Fun Home*, *Dogfight* (Spotlight Youth Theatre) Agnes/Tessie U.S in *Gypsy*, *Elf the Musical* (Arizona Broadway Theatre). She is currently studying voice with Renee Koher and Jordan Scott Gilbert.



**Ian Eller (*Tom*)** (he/they) is ecstatic to be making his Childsplay debut! Previous acting credits include Hunk/ Scarecrow in *The Wizard of Oz*, Joseph in *Joseph... Dreamcoat* (TheaterWorks), Brad in *The Rocky Horror Show*, Kurt in *Heathers* (SCP/Greasepaint), Dickon in *The Secret Garden* (Yavapai College), Rocks in *Bark! The Musical* (Jewel Box Poulso), *The Balcony* and *Cabaret* (Boston Conservatory). Directing: *25th...Spelling*

*Bee* (Greasepaint). He holds a BFA in Musical Theater from Boston Conservatory at Berklee.

(Continued)

## THE CAST *(Continued)*



**Cadence Lamb** (*Dina*) (she/her) is beyond thrilled to be making her Childsplay debut! While she now lives in NYC, Cadence grew up in Phoenix attending Childsplay productions! New York credits: *The Polar Express* (Rail Events Productions), *The Devil Smokes American Spirits* (Leave No Trace Theatre). Regional credits: Hamlet in *Hamlet*, Oberron/Theseus in *A Midsummer Night's Dream*, Mistress Ford in *Merry Wives of Windsor*, Ariel in *Tempest*, Viola in *Twelfth Night* (Flagstaff Shakespeare Festival), Rapunzel, *Apollo to the Moon*, *Romeo and Juliet* (Lexington Children's Theatre), *White Christmas*, *The Producers* (Barter Theatre), *The Little Mermaid*, *The Legend of Sleepy Hollow*, *James and the Giant Peach*, *Red Badge of Courage*, *Peter Pan* (The Barter Players), *Love's Labours Lost*, *110 in the Shade*, and *King John* (Texas Shakespeare Festival). She earned a BFA in Acting with minors in Dance and Psychology from Illinois Wesleyan University.

---



**Joshua Vern** (*George*) (they/them) is a veteran of theater in Phoenix. Hailing from the West Valley, Joshua has traveled all over the country singing and performing since 2009. After a few years of hiatus, Joshua is thrilled to make their resurgence, as well as their Childsplay debut, with everybody's favorite nostalgic edutainment!

### **Childsplay lovingly acknowledges the late Alan Ruch.**

Alan was the original music director for this production of *School House Rock, Live!*, as he was for so many Childsplay productions. He also arranged and recorded the accompaniment tracks for this production.

Alan was a talented and kind human being,  
with a wicked sense of humor.

We miss him.

## THE CREATIVE TEAM .....

**Anthony Runfola** (*Director*) is pleased to return to Childsplay and *Schoolhouse Rock Live!* Previous Childsplay directing credits include: *Rock the Presidents*, *Wonderland: Alice's Rock and Roll Adventure*, *Goodnight Moon*, *Charlotte's Web*, *Eric and Elliot*, *The Neverending Story*, and *Interrupting Vanessa*. He served as Childsplay's Director of Production from 1999-2019, overseeing over 150 plays and musicals. In 2019, Runfola was appointed artistic director of the Magik Theatre in San Antonio, TX. He has been a guest artist at theatres and colleges throughout the country including Black Theatre Troupe, Teatro Bravo, Stray Cat Theatre, Phoenix Theatre, Gammage/ASU Public Events, Scottsdale and Mesa Community Colleges, Geva Theatre Center, and Seattle Children's Theatre. In 2015, he was accepted into the inaugural cohort of ArtEquity. Theatre Communications Group selected him as one of 50 U.S. theatre practitioners to participate in I Am Theatre, a web series celebrating pivotal moments in the lives of theatre-makers. He is an alumnus of the Lincoln Center Theater Directors Lab ('98) and Director's Lab West ('00). For Alan, John, the B-Man, and Ed.

**Molly Lajoie** (*Choreographer*) is an ariZoni award-winning choreographer for her work on *The Producers* at Phoenix Theatre. Her Childsplay choreography credits include *Rock the Presidents* (ariZoni nomination), *Click Clack Moo* (ariZoni nomination), *Peter and the Wolf*, *Go! Dog! Go!*, *Busytown* and *Lilly's Purple Plastic Purse* (ariZoni nomination). Other Valley credits include *Gypsy* (ariZoni nomination), *Curtains* (ariZoni nomination), *The King and I*, *Nunsense*, and *One Mo' Time*. Molly has also directed and choreographed Valley Youth Theatre's production of *Snow White*, Greasepaint's *Schoolhouse Rock Live!* and Pennsylvania Youth Theatre's *Seussical, Jr.* Some of Molly's acting credits include *White Christmas* (Judy), *A Chorus Line* (Cassie), *The Will Rogers Follies* (Ziegfeld's Favorite—ariZoni Award nominee), *Cats* (Victoria), *Beauty and the Beast* (Babette) and *Seussical* (Bird Girl). She is a graduate of the University of Notre Dame and the American Musical and Dramatic Academy in New York City. Molly currently teaches in the LOT department at ASU as well as classes for Childsplay and a professional musical theatre dance class for Phoenix Theatre.

**Dr. Randi Ellen Rudolph** (*Music Director*) is a music director, collaborative pianist, and conductor who recently moved to Phoenix to pursue her DMA in Conducting at Arizona State University. She works as a music director on musicals and operas throughout the country, and she has performed at The Phoenix Theatre Company, Red Mountain Theatre, Highlands Playhouse, and Moonlight Stage Productions. She received

(Continued)

## **THE CREATIVE TEAM** *(Continued)*

the Louis J. Sudler Prize in Music for conducting and was named a semi-finalist in the national American Prize competition for her work in musical theater conducting. As a teacher and educator, Randi has a private vocal coaching, audition prep, and piano studio. She holds a MM in Opera and Musical Theater Conducting from Ithaca College and a BA in Music from Stanford University. See more at [www.randiellenrudolph.com](http://www.randiellenrudolph.com)

**Gail Wolfenden-Steib** (*Costume Designer*) is an award-winning theatrical costume designer based in Phoenix, Arizona and is delighted to be designing for Childsplay. She has been the resident costume designer for Stageworks at the Mesa Arts Center, Phoenix Theatre and Phoenix Theatre's Cookie Company. Her design and construction work has been seen on numerous stages around the valley since 1994. This past summer marked her 22nd season as the costume painter/dyer for the Tony Award Winning Utah Shakespeare Festival. In 2007, she presented the sold out professional development workshop on costume distressing at the USITT national conference in Phoenix. She is currently the Director of Costuming and Wardrobe for Childsplay.

**Tim Monson** (*Lighting Designer*) has been working in the Phoenix area for more than 10 years with Childsplay, Actors Theatre, Phoenix Metropolitan Opera, Arizona Broadway Theatre, Stray Cat Theatre and Phoenix Theatre Company. He studied lighting design at Northern Arizona University and San Diego State University. For the first several years of his professional career he worked as a touring lighting director and stage manager for Trinity Irish Dance Company, as well as lighting designer for the touring production of Bowfire. In addition to credits with Bowfire and Trinity Irish Dance Company, he designed numerous dance works for several Chicago dance companies. He is thrilled to be helping to bring *SchoolHouse Rocks Live!* to life again on the Childsplay stage.

**Adam Benavides** (*Projection Designer*) has been directing video production since graduating from Grand Canyon University in 2014. He worked with Manley Films, a small video production company in Phoenix, and helped to transform it into a thriving national agency. During his time at Manley Films, Adam managed creative direction for several clients, including Ballet Arizona, Phoenix Theatre, and Arizona Opera. His work includes commercials, marketing campaigns, short films, and documentaries. Adam's work has been featured in the California International Film Festival, the Phoenix Film Festival, and the New Filmmakers Festival LA to name a few. Currently, Adam works independently as a director, producer, and editor for an array of different clients.

**Holly Windingstad** (*Scenic Designer*) Holly is elated to be part of the creative team, rocking the set design. Favorite past works for Childsplay include *Tomás and the Library Lady*, *Maddi's Fridge*, *A Thousand Cranes*, *Rock the Presidents*, *Getting Near to Baby*, *Click Clack Moo: Cows that Type*, *Goodnight Moon*, and *The Three Javelinas*. Regionally her work has been seen at Casting Spell Productions (Minneapolis, MN), Stages Theatre (Hopkins, MN), Skylight Opera (Milwaukee, WI), Nebraska Repertory, Magik Theatre (San Antonio, TX) and Casa Manana (Fort Worth, TX). Holly designs have been featured in Chicago including Still Point Theater Collective, The Theatre School at DePaul, Northwestern University, Breadline, Equity Library, Shakespeare on the Green (Lake Forest, IL). In her leisure time she dances to 80's rock music with her husband, three daughters, a cat named Alvin, a dog named Murphy, and four speckled chickens.

**Chris Neumeyer** (*Sound Designer*) works as Sound Designer and Composer for many theater companies in Phoenix and abroad. Among his favorite productions are: *Rock the Presidents*, *The Sun Serpent*, *A Wrinkle in Time*, *The Phantom Tollbooth*, and *The Giver*, (Childsplay, Tempe, AZ); *Noises Off* and *The Lion, the Witch, and the Wardrobe* (AriZoni Winner, Mesa Community College, AZ); *In the Next Room and Secret Order* (Actors Theatre, Phoenix, AZ); and *All My Sons*, *Fences* and *Cabaret* (Theaterworks, Palo Alto, CA). In a previous incarnations, he was the Resident Sound Designer and Sound Supervisor for Childsplay, as well as producing sound effects and voice over content for multimedia projects, corporate DVD's, and feature films.

### **SCHOOL HOUSE ROCK LIVE! SONG LIST**

Verb: That's What's Happenin' .....	ALL
A Noun Is a Person, Place, or Thing .....	Dina
Three Is a Magic Number .....	ALL
Suff erin' 'Til Suff rage .....	ALL
Unpack Your Adjectives .....	Shulie
Just a Bill .....	George
The Preamble .....	ALL
Five (Ready or Not, Here I Come) .....	Tom
Do the Circulation .....	George, Shulie & Dina
Rufus Xavier Sarsaparilla .....	Tom
Victim of Gravity .....	ALL
Conjunction Junction .....	ALL
Interplanet Janet .....	ALL
Interjections .....	ALL
The Tale of Mr. Morton .....	ALL
Bows .....	ALL

## CHILDSPLAY LEADERSHIP .....

**Dwayne Hartford** (*Childsplay Artistic Director*) moved to Arizona in 1989. He answered an ad in the paper for an acting job. That job was for Childsplay. In 1992, he originated the role of the Father in Childsplay's world premiere production of *The Yellow Boat*. Dwayne has directed many shows for Childsplay, including: *Ella Enchanted*, *The Phantom Tollbooth*, and *Flora & Ulysses*. The first play he wrote, *Eric and Elliot*, received the 2005 Distinguished Play Award from the American Alliance of Theatre & Education (AATE). *The Miraculous Journey of Edward Tulane* received the same award in 2018. Dwayne's plays have been produced professionally around the country including Seattle Children's Theatre, Dallas Children's Theatre, Chicago Children's Theatre, and South Coast Repertory. Dwayne became Childsplay's Artistic Director upon the retirement of his mentor, the founder of the company, David Saar. Dwayne holds a BFA in musical theatre from the Boston Conservatory. He did graduate work in directing at Boston University. He is from the very small town of Smithfield, Maine.

**Steve Martin** (*Managing Director*) is in his 20th season as Managing Director at Childsplay. During this time, the company has moved into the Sybil B. Harrington Campus for Imagination and Wonder; secured significant funding from the US Department of Education for arts education programming throughout the metro Phoenix area; received funding from national foundations including the Hearst Foundation, Doris Duke Charitable Trust, and the Shubert Foundation; received substantial support from local foundations including the Legacy Foundation, Virginia G. Piper Charitable Trust, The Flinn Foundation, Steele Foundation, and the Helios Education Foundation; and produced more than 30 world premieres. He is a native of Toledo, Ohio, and a graduate of the University of Toledo. Martin is currently on the board of East Valley Partnership and formerly served on the boards of Arizona Citizens for the Arts (past President), TYA/USA — the national organization for theatre for young audiences and LORT/League of Resident Theatres. Prior to joining Childsplay, he was Assistant Managing Director of the Alliance Theatre Company in Atlanta, Georgia, and the Managing Director of Virginia Stage Company in Norfolk, Virginia.



# CHILDSPLAY

THEATRE ACADEMY

## Weekly Summer Classes

**AGES 4-17 • MAY 31-JULY 29, 2022**

You've seen the show, now come learn from the pros!  
New classes are starting every week and we have dozens of options. Here are just a few notables:



**SEUSSICAL JR.:** (Ages 8-14)  
Perform at the TCA in this beloved classic.

**MADRIGAL FAMILY TREE:**  
(Ages 6-9) Discover your own unique gifts that make YOU magical!



**STAGECRAFT & DESIGN:**  
(12+) Design and create theatrical moments behind the scenes.



**REGISTER NOW! [CHILDSPLAYAZ.ORG/CLASSES](https://childsplayaz.org/classes)**

“One of the underlying core values of Childsplay is the notion of *ensemble*. There is a resident group of theatre artists (our Associate Artists) who, in collaboration with the Artistic Director, are responsible for planning and creating the artistic products that illustrate Childsplay’s mission. But these artists do not create in isolation. Everyone who works at Childsplay—other artists, technicians, educators, administrators and trustees—is a part of this resident ensemble. This mindset guides the way our work is created, the way it is marketed and the way it is delivered. Ideally, all of these individuals are housed under one roof, allowing for the free and open exchange of ideas and opinions.” —*Childsplay’s Strategic Plan 2012*

**Dwayne Hartford** ..... *Artistic Director*  
**Steve Martin** ..... *Managing Director*  
**Jenny Millinger** ..... *Associate Artistic Director*  
**Ricky Araiza** ..... *Associate Artistic Director*  
**David P. Saar** ..... *Founder & Artistic Director Emeritus*

**ADMINISTRATION**

Ellen Conn, *General Manager*  
 Emily Hopfauf, *Bookkeeper*  
 Greg Estrada, *Custodian*  
 Dawn Brown, *Finance Consultant*  
 Molly Miller, *Office Volunteer*

**ASSOCIATE ARTISTS**

Katie McFadzen, *Associate Artist*  
 Debra K. Stevens, *Associate Artist*  
 Jon Gentry, *Associate Artist*  
 José Cruz González, *Artist-in-Residence*

**COMMUNITY ENGAGEMENT**

Brianna Fallon, *Academy Manager*  
 Thomas Underdal, *Academy Associate*  
 Averi Gutierrez, *Director of Marketing & Media*  
 Megan Mayo, *Marketing & Media Associate*  
 Katie Brantley, *Director of Education  
& School Programs*  
 Jacqui Castillo, *School Relationship & Booking  
Coordinator*  
 Sonia Rodriguez Wood, *School Relationship  
& Booking Coordinator*  
 Ernesto Ortiz, *Director of Development*  
 Karen Peirce, *Development Associate*  
 Jodie Weiss, *Events & Volunteer Manager*  
 MaryLisa McKallor, *Education & Development  
Associate*  
 Jane Gerke, *Company Graphic Designer*  
 Tim Trumble, *Company Photographer*

**COSTUMES & WARDROBE**

Gail Wolfenden-Steib, *Costuming  
& Wardrobe Director*  
 Emma Jackson, *Wardrobe Supervisor/Stitcher*

**PRODUCTION & STAGE MANAGEMENT**

Rachel Solis, *Production Manager*  
 Mara Nadolski, *Associate Production Manager*  
 Kody Hernandez, *Stage Manager*  
 Ryan Clark, *Stage Manager*  
 Phoenix Jacob, *Stage Manager*  
 Emma Walz, *Assistant Stage Manager*  
 Ryan Bowman, *Stage Manager*  
 Joshua Vern, *Assistant Stage Manager*

**SCENERY & PROPERTIES**

Montana Thompson, *Master Carpenter*  
 David Singleton, *Properties Master*  
 Julia Rogge, *Scenic Charge Artist*

**LIGHTING**

Bret Reese, *Master Electrician*

**ASL INTERPRETERS**

Judy Robbins  
 Dawn Schoenberger

(Continued)

# ASK AN ACTOR!

We asked the cast from *Schoolhouse Rock Live!*:

**When was a time you felt nervous, like Tom does in the play? What did you do to feel more confident?**



## HERE'S WHAT THEY SAID:

**Ian:** “Tom is a new teacher who just received his degree, and I just received my degree last year! I definitely still get nervous before I perform, but remembering why I fell in love with theater in the first place gives me the confidence to do my best, and have fun doing it!”

**Cadence:** “I can get really nervous before traveling. Did I remember everything? Will I make it on time? But what makes me feel better is making lists of what I need to do and what I need to pack and that makes me feel WAY better. Plus, some deep breathing always helps, too!”

**Alyssa:** “A time I felt nervous was the first time auditioning since COVID hit, and what I did to feel more confident was words of affirmations. A great way to build confidence!”

**Joshua:** “One time that I felt nervous was when I realized that I wasn't the person that everybody thought I was, and I was afraid that that meant I wouldn't get to act anymore! Something that I did to help me feel more confident was that I talked to the people who cared about me the most, and they helped me find doctors and professionals who helped me become the person I was on the inside!”

## CHILDSPLAY COMPANY AND STAFF *(Continued)*

### 2021-2022 ACTING COMPANY

Alyssa Armstrong	Katie McFadzen	Lillie Richardson	Michael Thompson
Matravius Avent	Lauren McKay	Bruno Streck	Ugene Titus
Ian Eller	Andréa Morales	Rodrigues	Sedona Valdez
Tommy Francesco	Celena Morgan	Michael Salinas	Joshua Vern
Anissa Garza	Luz Navarro	Kariana Sanchez	Marshall Vosler
Jon Gentry	Greta Perlmutter	Anna Sera	
Jermane Jackson	Jonny Ramirez	Thomas Strawser	
Cadence Lamb	McKenzie Reese	Debra K. Stevens	

### 2021-2022 TEACHING ARTISTS

Emily Burritt	Katie'B Jarvis	Julia Murphy	Julio-César Saucedo
Sarah Chanis	Isabel Julazadeh	Cam Oakes	Alli St. John
Mary Ellen Loose	Kendra Kahl	Dorian Peterson	Emily-Rae Tietz
Jen Gantwerker	Molly Lajoie	Elizabeth Polen	Thomas Underdal
Kate Haas	Kim Manning	Calli Rasmussen	Lauren Westphal
Keath Hall	Rachel McCabe	Lillie Richardson	Jason White
Garrett Hicks	Maddy Moreland	Ericca Rose	Mikayla Wilkerson



480-921-5700 | CHILDSPLAYAZ.ORG

- Childsplay, founded in 1977, is a non-profit professional theatre company of adult actors, teaching and performing for young audiences and families.
- Childsplay's mission is *to create theatre so strikingly original in form, content, or both that it instills in young people an enduring awe, love and respect for the medium, thus preserving imagination and wonder, those hallmarks of childhood that are the keys to the future.*
- This season, Childsplay expects to give 700 performances for nearly a quarter million young people in schools and on public stages throughout the state and country.
- Childsplay launched its first national tour in 2007, with *Tomás and the Library Lady*. Since then, the company has completed 11 more national tours throughout the United States (including Alaska!) and Canada. This season, Childsplay will send both *Maddi's Fridge* and *The Snowy Day* out on national tour!
- Childsplay's administrative offices, classrooms, rehearsal halls, prop and costume shops are located at the Sybil B. Harrington Campus for Imagination and Wonder at Mitchell Park, 900 South Mitchell Drive, Tempe.
- Childsplay is a constituent of Arizona Citizens for the Arts, East Valley Partnership, Theatre Communications Group (TCG), the national organization for American theatre; TYA/USA, the U.S. Chapter of ASSITEJ, the international organization for theatre for young audiences; the Tempe Chamber of Commerce; the Arizona Hispanic Chamber of Commerce, Alliance of Arizona Non-Profits; and the American Alliance for Theatre and Education (AATE).

# THE SOCIETY FOR IMAGINATION AND WONDER

*The Society for Imagination and Wonder honors those who have made a significant investment to Childsplay and in supporting the leaders of the future. Thank you for helping us share imagination, wonder and joy with children of all ages.*

## SOCIETY FOR IMAGINATION AND WONDER LIFETIME MEMBERS

*Childsplay gratefully acknowledges our Lifetime Members, who have made cumulative gifts of \$20,000 or more as of March 31, 2022.*

*\*Indicates Annual Society Membership as well*

### **VISIONARY: \$2,000,000 & ABOVE**

Sybil B. Harrington Trust  
Virginia G. Piper Charitable Trust\*

### **TRANSFORMER: \$1,000,000 & ABOVE**

City of Tempe\*  
US Department of Education

### **INNOVATOR: \$500,000 AND ABOVE**

Arizona Commission on the Arts\*  
The Kemper and Ethel Marley Foundation  
Flinn Foundation\*  
Shubert Foundation\*  
Target  
The Steele Foundation\*

### **ENERGIZER: \$250,000 & ABOVE**

American Airlines  
APS\*  
BHHS Legacy Foundation\*  
Carol Critchfield Foundation  
Carol DuVal Whiteman  
Doris Duke Charitable Foundation\*  
Helios Education Foundation  
J.W. Kieckhefer Foundation\*  
Margaret T. Morris Foundation\*  
Nina Mason Pulliam Charitable Trust  
Phoenix Office of Arts and Culture\*  
Salt River Project\*  
The Herberger Foundation\*  
Thunderbirds Charities\*  
Wells Fargo Bank

### **ORIGINATOR: \$100,000 & ABOVE**

American Express  
Arizona Community Foundation\*  
Arizona Republic\*  
The Boeing Company

Shelley Cohn and Mollie C. Trivers\*  
Joanie Flatt\*  
Freeport-McMoRan Copper and Gold  
Giggling Gwen Foundation, in loving  
memory of Gwen Van Kirk  
Anonymous  
Lisa and William Hobson\*  
Michael Flatt  
National Endowment for the Arts\*  
Scottsdale Arts\*  
The Hearst Foundation  
Theatre Communications Group  
Whiteman Foundation

### **PIONEER: \$50,000 & ABOVE**

Alliance Bank of Arizona  
Anonymous\*  
John Back and Diane Haas\*  
Roxana and Dean Bacon  
Banner Health, Cardon Children's  
Medical Center  
Blue Cross Blue Shield of Arizona  
CBS 5 AZ KPHO  
CALA Alliance  
Child Abuse Prevention License  
Plate Program  
Eliot Spalding Foundation\*  
LeRoy and Kate Ellison  
Ardie and Stephen Evans\*  
Susan and Rich Goldsmith\*  
Hazel Hare  
JP Morgan Chase  
Ray and Kelly Leppien\*  
Lewis Roca Rothgerber Christie LLP  
Dr. Cheryl Mandala\*  
Maricopa Partnership for Arts and Culture  
Neavitt/Thomas Endowment Fund\*  
Dan O'Neill and Jenny Lucier  
Linda Pulaski\*

*(Continued)*

## SOCIETY FOR IMAGINATION AND WONDER LIFETIME MEMBERS

### **PIONEER: \$50,000 & ABOVE** *(Continued)*

David and Sonja Saar\*  
Carol and Randy Schilling  
Snell & Wilmer  
Tim Thomason

### **DEVELOPER: \$35,000 & ABOVE**

Barbara and John Bebbling  
Rebecca and Bill Akins\*  
Barbara and John Bebbling  
Marcia and Matthew Benjamin\*  
Susan Brekke  
Jim and Julie Copenhaver  
The Dorrance Family Foundation  
Fennemore Craig  
Fiesta Bowl Charities  
Friends of Tempe Center for the Arts  
Jane A. and Alan G. Lehman Foundation\*  
James and Debra Larson\*  
Alan Longfellow  
Ann and Fred Lynn  
Macy's Foundation  
Steve Martin\*  
Anonymous\*  
Karen Majestic Powell and Bill Powell\*  
Caleb Reese\*  
Nelson Ross\*  
Scottsdale League for the Arts  
Ann Stanton and Bob Haddock\*  
Thrivent Financial\*  
Twiford Foundation

### **PROMOTER: \$20,000 & ABOVE**

Arizona Diamondbacks Foundation  
Bank of Arizona  
Trevor Barger  
Daron and Ron Barness Family Foundation  
Amy and Travis Beeman\*  
Jenice and John Benton  
BMO Harris Bank  
Carstens Family Funds  
City of Peoria\*  
Claude and Susan Case  
Casino Arizona & Talking Stick Resort  
Cox Charities  
Creative Capital Foundation/MAP Fund  
Dora and Louis Fox Charitable Trust\*  
Leslie Dashew and Jack Salisbury\*  
Betty Drake  
Ellis Education Fund / Arizona Community  
Foundation

Tim and Susie Ernst\*  
Christine Ewing  
First Things First  
Gail Fisher and Mel Kessler\*  
David L. Kest and Robert "Sandy"  
Chamberlain  
Catherine Foley  
Gaylord and Erika Gagnon\*  
Gesner-Johnson Family Foundation  
Glendale Arts Commission\*  
Dwayne Hartford\*  
Drs. Jeanne Hokin Wills and J. Robert Wills  
Lisa Coulter Hyland and Timothy Hyland\*  
Nathan Joseph\*  
KPMG LLP  
Lynne Lagarde and Robert Stankus\*  
Sally and Richard Lehmann  
Stephanie Machen  
Maricopa County\*  
Laurie McWeeney  
Medtronic Foundation  
Mary Ann Miller  
Jenny Millinger  
Myra Millinger\*  
National Bank of Arizona  
Phoenix Suns Charities  
Resolution Copper  
Norman and Pam Saba  
C. Angus Schaal  
Scottsdale Insurance Company/Nationwide  
Insurance Foundation  
The Stocker Foundation  
Nancy and Michael Stone  
Elden Strahm  
Nancy Swortzell  
Elizabeth True and Dan Bloomfield\*  
Tucson-Pima Arts Council  
Rosenlund Family Foundation  
Jennifer and Mike Van Kirk  
Keith and Debra Wells  
WESTAF  
Rick and Vicki Williams  
Lin and Jim Wright

## SOCIETY FOR IMAGINATION AND WONDER ANNUAL MEMBERS

*Childsplay gratefully acknowledges our Annual Members, who have contributed annual gifts of \$1,000 or more as of March 31, 2022.*

### **ADVENTURER: \$5,000 AND ABOVE**

Rebecca and Bill Akins  
Katherine Badrick and Sharad Desai  
Marcia and Matthew Benjamin  
Elizabeth True and Dan Bloomfield  
Shelley Cohn and Mollie C. Trivers  
Joanie Flatt  
Dora and Louis Fox Charitable Trust  
Susan and Rich Goldsmith  
Jane A. and Alan G. Lehman Foundation  
Dr. Cheryl Mandala  
Karen Majestic Powell and Bill Powell,  
in honor of their first grandchildren,  
River and Margo  
Caleb Reese  
Leslie Dashew and Jack Salisbury

### **EXPLORER: \$2,500 AND ABOVE**

Amy and Travis Beeman  
Ardie and Steve Evans  
Jeffrey Breck Guldner  
Lisa and William Hobson  
Wendy Feldman Kerr  
Linda Reidenbach  
Nelson Ross  
Joey Trahan

### **STORYTELLER: \$1,000 AND ABOVE**

AtLee Family Foundation  
Cynthia and Rob Baker  
Karen and Daniel Barr  
Shirley Hawley and Bill Blair  
Carol J. Christine  
Tasha Cycholl and Josh Rubin  
Tim and Susie Ernst  
Gail Fisher and Mel Kessler  
Ronda Fisk  
Connie Furr and Michael Soloman  
Rebecca and David Gaspar  
Gaylord and Erika Gagnon  
Jeff and Erin Goodman  
Dwayne Hartford  
Lisa Coulter Hyland and Timothy Hyland  
Kate and Kurt Janson  
David Jazo  
Nathan Joseph  
Lynne Lagarde and Robert Stankus

James and Debra Larson  
Philip and Ellen Leavitt  
Kelly and Raymond Leppini  
Jane Martin  
Steve Martin  
Carol and Dave Mattson  
Paul and Amy Mescher  
Myra Millinger  
Kathleen Moroz  
Sandra and Joseph Palais  
Molly Lajoie Plutnicki and Ryan Plutnicki  
Tiffany and Miles Pondelik  
Linda Pulaski  
Alyza Rathor  
Suzanne and Peter Richards  
David and Sonja Saar  
Ann Stanton and Bob Haddock  
Marsh Taylor  
Joy Tevis  
Linda Thompson  
Betty Van Denburgh  
Linda and Richard Warren  
Susan and Mike Wissink  
Barb and Barry Zemel

## CHILDSPLAY BOARD OF TRUSTEES 2022-23

---

<b>President</b> .....	<b>Matthew Benjamin</b> <i>Community Arts Advocate</i>
<b>Vice President</b> .....	<b>Alison Pulaski Carter</b> <i>BurnsBarton LLP</i>
<b>Secretary</b> .....	<b>Cheryl Mandala</b> <i>Community Arts Advocate</i>
<b>Treasurer</b> .....	<b>Shirley Hawley</b> <i>Community Arts Advocate</i>
<b>Immediate Past President</b> .....	<b>Lisa Coulter</b> <i>Snell &amp; Wilmer</i>

### MEMBERS

John Back .....	<i>JVBack &amp; Co. LLC</i>
Travis Beeman.....	<i>KPMG LLP</i>
David Bray .....	<i>Dickinson Wright PLLC</i>
Roseline Cristanelli.....	<i>Reliance First Realty, LLC</i>
Tasha Cycholl.....	<i>Kutak Rock LLP</i>
Sharad Desai.....	<i>Honeywell International</i>
Joanie Flatt .....	<i>Flatt &amp; Associates</i>
Gaylord Gagnon.....	<i>APS</i>
Susan Goldsmith.....	<i>Community Education Advocate</i>
Lisa Hobson, <i>Tempe</i> .....	<i>School District (retired)</i>
David Jazo.....	<i>Arizona Bank and Trust</i>
David Kest .....	<i>Community Arts Advocate</i>
Vanessa Kisicki.....	<i>SRP</i>
Alyza Land.....	<i>Jazz Pharmaceuticals</i>
Miles Pondelik .....	<i>Western Alliance Bank</i>
Marcelino Quiñonez.....	<i>ASU Foundation</i>
Linda Reidenbach.....	<i>Thrivent Financial</i>
Nelson Ross .....	<i>Community Arts Advocate</i>
Brendan Ross .....	<i>City of Tempe</i>
Revan McKinnon Rottach.....	<i>Wells Fargo Bank</i>
Heather Stratz.....	<i>Community Arts Advocate</i>
Jennifer Van Kirk.....	<i>Lewis Roca Rothgerber Christie</i>
Susan Wissink.....	<i>Fennemore Craig Dowling Aaron</i>

### TRUSTEE EMERITUS

Harry E. Mitchell .....	<i>Former US Congressman</i>
-------------------------	------------------------------