

Childsplay's 2008-09 Season

For additional information, contact:

Rosemary Walsh
rwalsh@childsplayaz.org
480-921-5703

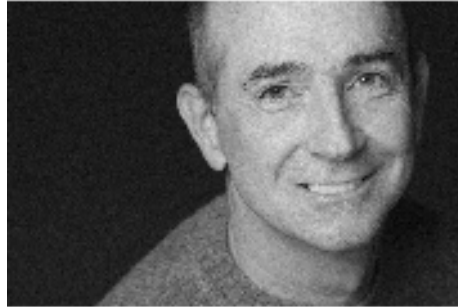
Laura Royal
lroyal@childsplayaz.org
480-921-5727



CHILDSPLAY NEWS RELEASE

For immediate release 09/23/08

Visit [Childsplay's Media Room](#) for photos



Childsplay Associate Artist Jon Gentry Selected for Lunt-Fontanne Fellowship Program

Tempe, AZ – Childsplay, Arizona's professional theatre company for young audiences and families, is proud to announce that Childsplay Associate Artist Jon Gentry was awarded a fellowship from the Lunt-Fontanne Fellowship Program.

The Lunt-Fontanne Fellowship Program is a national program that serves regional-theatre actors and the future of American Theatre. Every year, eleven actors in the country are invited to participate in an intensive week-long master class and retreat at Ten Chimneys with a master teacher. The inaugural class of Lunt-Fontanne Fellows will convene with master teacher Lynn Redgrave, August 3-9 2009, at Ten Chimneys in Genesee Depot, Wisconsin. Redgrave and the 2008-09 Lunt-Fontanne Fellows will focus exclusively on Shakespeare – this work will take place at the Ten Chimneys estate and the state-of-the-art Lunt-Fontanne Program Center. Each of the actors will receive a \$2,500 cash fellowship and all travel and lodging expenses will be covered.

Childsplay's 2008-09 Season

Gentry was nominated for this fellowship by Arizona Theatre Company. The theatre is one of eleven regional-theatre companies that has partnered with the Lunt-Fontanne Fellowship Program. Each theatre submitted three actors for consideration. A National Advisory Council works with the Ten Chimneys Foundation to select actors who will be named Lunt-Fontanne Fellows.

“Jon is unafraid to take enormous imaginative risks that are always grounded in a base of reality. Through his considerable talent, passion, love of theatre, and belief in its potential as a change agent in the lives of young people – as both an actor and a teacher – Jon challenges young people to discover their best and inspires adults audiences to examine their world with childlike wonder,” said Arizona Theatre Company Artistic Director David Ira Goldstein.

Gentry has been a full-time member of Childsplay's acting company since 1982. After 26 years, his favorite Childsplay shows include *The Overcoat*, *Clarissa's Closet*, *In My Grandmother's Purse*, *The Nightingale*, *Wind in the Willows*, *A Year With Frog and Toad*, and *The Yellow Boat*. With Childsplay, he was recently seen in *A Tale of Two Cities*, *Charlotte's Web*, and *Seussical*. Locally, he has been seen in *The Producers*, *The Pillowman*, *Angels in America*, *Blue Orange*, *Oscar and Felix*, *Complete Works of Shakespeare (Abridged)*, and *A Funny Thing Happened on the Way to the Forum*. He has performed for Phoenix Theatre, Actor's Theatre, Mill Mountain Theatre, Seattle Children's Theatre, PCPA Theatre Fest, Southwest Shakespeare and Arizona Jewish Theatre.

Please note: Childsplay's administrative offices have moved to the new Sybil B. Harrington Campus for Imagination and Wonder at Mitchell Park (formerly Mitchell School), 900 S. Mitchell Dr., Tempe, Arizona 85281. Main office phone: 480-921-5700.

Childsplay, Inc. is a nonprofit theatre company of professional, adult artists who perform for and teach young audiences and their families. The mission of Childsplay is “to create theatre so strikingly original in form, content or both, that it instills in young people an enduring awe, love and respect for the medium, thus preserving imagination and wonder, the hallmarks of childhood which are keys to the future.” For information on Childsplay performances, classes or educational presentations please call 480-921-5700 or visit our website at www.childsplayaz.org.

###