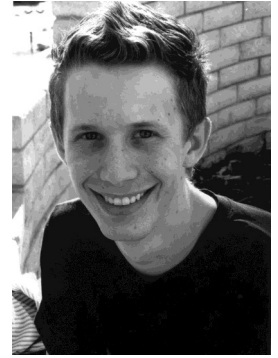




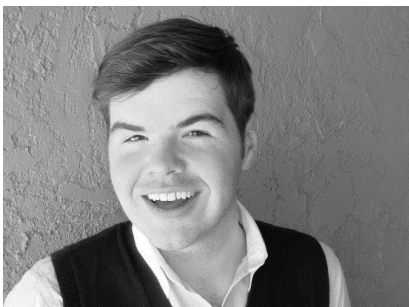
Childsplay's 360° Theatre Resources for Schools
Who's who in
With Two Wings
2011-2012 Season
www.childsplayaz.org

Nathan Dobson (*Lyf*) is excited to be returning to Childsplay for his second season after making his company debut as Sheldon in *Junie B. Jones*. Other Childsplay credits include: Tim, in the Arizona tour of *The Imaginators* and Chester in *Lilly's Purple Plastic Purse*. Nathan's roles outside of Childsplay include Solomon in *Speech and Debate* and The Telegram Delivery Boy in *Octopus*, both at Stray Cat Theatre.



Jon Gentry (*Dad*) has been a member of Childsplay's acting company since 1982; Jon spent 6 months in Europe performing *Steen, Papier, Schaar* with Speel Theater. Some of his favorite Childsplay roles include Toad in *A Year with Frog and Toad* (the first time) and Benjamin in *The Yellow Boat*. Jon has also performed Max Bialystock in *The Producers*, Tupolski in *The Pillowman*, Roy Cohn in *Angels in America, Parts One and Two*, *Blue Orange*, *Compleat Wrks of Shspr* (Abridged) and *A Funny Thing Happened on the Way to the Forum*. His directing credits include *In My Grandmother's Purse*, *Stones In His Pockets*, *Belle Of Amherst*, *Rhubarb Jam*, *The Imaginators* (original production) and *Equus*. Jon was awarded a Lunt-Fontanne Fellowship by the Ten Chimneys Foundation, one of 10 actors in the United States to participate in the Inaugural Lunt-Fontanne Fellowship Program.

Kate Haas (*Mom*) is thrilled to return for her fifth season as an actor and teaching artist with Childsplay, where she was last seen as Garland in *Lilly's Purple Plastic Purse*. Previous roles include Isabella in *Androcles and the Lion*, The Good Fairy (and others) in *The Neverending Story*, Phoebe in *Miss Nelson is Missing!*, Mother/Grandmother in *A Thousand Cranes*, Miss Pross in *A Tale of Two Cities*, and Mother/Audrey in *Alexander and the Terrible, Horrible, No Good, Very Bad Day*. Her other favorite roles include Steph in *reasons to be pretty* and Jill in *Learn to Be Latina* (Stray Cat Theatre), Olive/ Agnes in *Times Square Angel* (Nearly Naked Theatre), and Judith in *The Ash Girl* (Arizona State University). Kate studies at the Megaw Actors Studio and holds a BA in Theatre from Arizona State University.



John Moum (*Taur*) is blessed to be returning for his third season at Childsplay after touring in *Ferdinand the Bull* (Ferdinand) and *New Kid* (Nick). He was most recently seen as Mr. Primm in *Lyle the Crocodile*. John is also a teaching artist for Childsplay's Academy and Conservatory programs. His favorite roles include Ronnie in *Hair*, Buck in *Zanna Don't!*, Britt Craig in *Parade*, Tobias in *Sweeney Todd*, and his first role as a frog in pre-school.

Kaleena Newman (*Meta*) Kaleena is excited to be performing in her second season with Childsplay. She was last seen as Willa Jo in the Arizona premiere of *Getting Near to Baby* in 2008. Kaleena is a junior theatre major at ASU where she was recently seen in their main-stage production of *Zoot Suit*. Previous credits also include Meta in *Fly/Lyf* (Phoenix Fringe) and the title role in *Seagirl* (ASU). Kaleena has worked as a Teaching Artist with Childsplay for the past three years and spent last fall in Washington DC studying American Sign Language.

