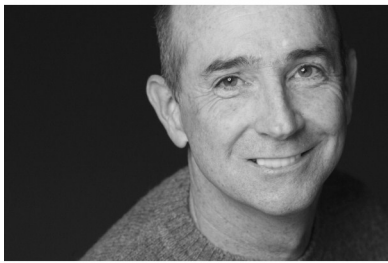
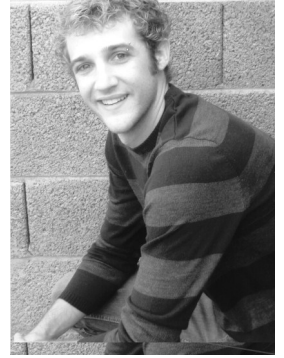




Childsplay's 360° Theatre Resources for Schools
Who's who in
Lyle the Crocodile
2011-2012 Season
www.childsplayaz.org

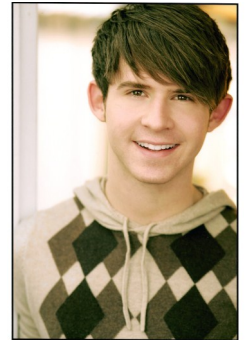
Eric Boudreau (*Ensemble*) is originally from Port Angeles, WA and is in his fourth season as a member of the Childsplay Ensemble having appeared in *Busytown*, *The Neverending Story*, *Androcles and the Lion*, and *The Imaginators*. He is also a teaching artist for the Childsplay Summer Academy and Conservatory Classes. Other valley credits include *The Quiltmaker's Gift*, *Octopus*, *Speech and Debate*, *Mr. Marmalade*, *Parade*, and Lisa Starry's *A Vampire Tale*.



Jon Gentry (*Mr. Grumps*) has been a member of Childsplay's acting company since 1982. Jon spent 6 months in Europe performing *Steen*, *Papier*, *Schaar* with Speel Theater. Childsplay shows include: Toad in *A Year with Frog and Toad* and Benjamin in *The Yellow Boat*. Other roles: Max Bialystock in *The Producers*, Tupolski in *The Pillowman*, Roy Cohn in *Angels in America, Parts One and Two*. Also, *Blue Orange*, *Compleat Wrks of Shspr (Abridged)* and *A Funny Thing Happened on the Way to the Forum*. Directing credits: *In My Grandmother's Purse*, *Stones In His Pockets*, *Belle Of Amherst*, *Rhubarb Jam*, *The Imaginators* and *Equus*. Jon was awarded a Lunt-

Fontanne Fellowship by the Ten Chimneys Foundation and was one of 10 actors in the United States to participate in the Inaugural Lunt-Fontanne Fellowship Program.

Adam Hostler (*Lyle*) is thrilled to be making his Childsplay theatre debut. He recently graduated from University of the Arts where he received his BFA in Musical Theatre. Previous roles include: Medvedenko in *Seagull*, Phil Dolan II in *On Your Toes*, and Josh Crenshaw in *Coming*. Also, he has been seen in ensembles of *Tommy* and *Follies*.



Kim Manning's (*Mrs. Primm*) career has taken her from The Ice Capades, to dance, theater, film, television and back, traveling all over the place! She lived in Spain for 24 years and some of her credits include, *The Cheetah Girls 2* (directed by Kenny Ortega), a couple hit shows on Spanish television (9 seasons each), and an invitation to perform in the Edinburgh International Festival. She was recently seen at Phoenix Theatre in *NINE* and *Charlotte's Web*. This is Kim's third season as a teaching artist with Childsplay, having taught conservatory, academy classes and residencies. She is also a founding member of Phoenix Theatre's Partners That Heal and continues there since 2008 serving the kids at Phoenix Children's Hospital and St. Vincent de Paul's.

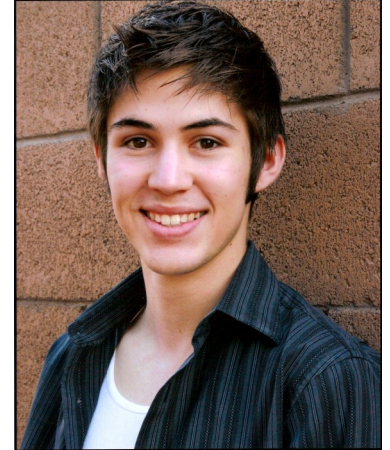
Katie McFadzen (*Ms. Nitpicker*) is an Associate Artist with Childsplay and has been with the company as an actor and teaching artist since 1993. Favorite Childsplay roles include: Bird/Mouse in *A Year With Frog and Toad*, Junie B. in *Junie B. in Jungle Bells*, *Batman Smells*, The Queen of England in *The Big Friendly Giant*, Miss Nelson/Miss Swamp in *Miss Nelson is Missing*, Mayzie in *Seussical*, Lilly in *Lilly's Purple Plastic Purse*, and Aunt Patti in *Getting Near to Baby*. Other credits include *Speech and Debate* (Stray Cat Theatre), *Little Queen* (Teatro Bravo), *The Women* and *Something's Afoot* (Phoenix Theatre), *The Pursuit of Happiness* and *Parallel Lives: The Kathy and Mo Show* (Actors Theatre) and *How the Other Half Loves* (Arizona Theatre Company). Katie also helps create Childsplay's 360° Resource Guides connected to the productions.





John Moun (*Mr. Primm*) is blessed to be returning for his third season at Childsplay and his first time on the mainstage after touring in *Ferdinand the Bull* (Ferdinand) and *New Kid* (Nick). John is also a teaching artist for Childsplay's Academy and Conservatory programs. Favorite Roles include: *Hair* (Ronnie), *Zanna Don't!* (Buck), *Parade* (Britt Craig), *Sweeney Todd* (Tobias), and his first role as a frog in pre-school. John will appear next in Childsplay's upcoming world premiere production of *With Two Wings*.

Colin Ross (*Joshua*) is originally from El Paso, Texas. He spent the last two summers teaching for the Academy program at Childsplay. Last year he was lucky enough to join the national tour of *Ferdinand the Bull* as Danilo. In the spring he will be in the world premiere of Childsplay's *Rock the Presidents*.



Christiann Cosler Thijm (*Ensemble*) is excited to be working with Childsplay again after taking some time off to have her first child, Ella. AZ credits: Childsplay: *A Little Bit of Water* (Marie) and *Busytown* (Grocer Cat/Nurse Raccoon) Actors Theatre: *Rabbit Hole* (Becca). Other credits include: *The Radio City Christmas Spectacular with The Rockettes* 1999-2005 (Mrs. Claus), *Godspell* (Sonia), *Working* (The Waitress), *Grease* (Marty), *Vanities* (Joanne). She has also had the pleasure of traveling the world as lead singer on various Royal Caribbean International and Holland America Line cruise ships where she shared the stage with the likes of Adam Lambert and Ben Vereen. Christiann is a graduate of The American Musical and Dramatic Academy in New York City.

Christiann is a graduate of The American Musical and Dramatic Academy in New York City.

D. Scott Withers (*Hector P. Valenti*) has been a member of the Childsplay acting company since 1989. Last season Scott appeared in *A Year with Frog and Toad* and *Go, Dog. Go!* for Childsplay, performed in *Footloose* for Arizona Broadway Theatre and *Hairspray* for Phoenix Theatre and Arkansas Rep and directed *The Wiz* for Greasepaint Youtheatre. Other favorite roles at Childsplay: *Seussical*, *Petite Rouge*, *A Tale of Two Cities*, *The Yellow Boat*, *Eric and Elliot*, *Schoolhouse Rock Live!*, *Wiley and the Hairy Man*, *Still Life With Iris* and *The Wind in the Willows*. Other performance credits: *Baby*, *Gypsy* and *Bye, Bye Birdie* (Arizona Broadway Theatre), *A Year with Frog and Toad* (Seattle Children's Theatre); *Company*, *Forum* and *Into the Woods* (Phoenix Theatre); *A Christmas Carol* (Actors Theatre); *Pageant* (Howgood Productions); and *The Jungle Book* (Fulton Opera House). Directing credits include: *Androcles and the Lion* and *Alexander and The Terrible, Horrible, No Good, Very Bad Day* at Childsplay, *The Women at Phoenix Theatre*, *The Crucible*, *Into the Woods*, *Victor/Victoria*, *Snoopy!!!*, *Annie Get Your Gun*, *Footloose* and *Once On This Island* at Stagebrush, *Jeffrey* at IMCO, *The Life* at Black Theatre Troupe, *Meet Me In St. Louis* at the Sun Dome and *The Selfish Giant* and *Christmas in the Land of Oz* at Arizona Broadway Theatre. He served as Artistic Director for Greasepaint Youtheatre where he directed *Rent: School Edition* and *Pippin* and was the founding managing director for In Mixed Company. Scott is originally from Idaho and holds a BFA in Theatre Performance from ASU.

