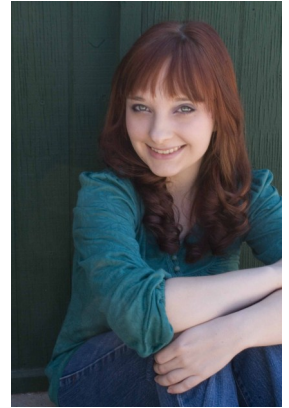




Childsplay's 360° Theatre Resources for Schools
Who's who in
Lilly's Purple Plastic Purse
2011-2012 Season
www.childsplayaz.org

Michelle Cunneen (*Student*) is thrilled to return to the Childsplay stage. She was last seen as Arrietty Clock in *The Borrowers* (AriZoni Award Nomination). Other previous Childsplay roles include Bird in *Peter and the Wolf* (National Tour), Cynthia Wainwright in *Getting Near to Baby* and The Childlike Empress/ Night Hob in *The Neverending Story*. She was also seen briefly as May in the 2009 production of *Junie B. in Jingle Bells, Batman Smells!* Michelle performs throughout the community as well. Some favorite roles include Little Sally in *Urinetown* with Tempe Little Theater, Gertrude McFuzz in *Seussical* with Mesa Community College and Vanessa Goldwyn in *Little Queen* with Teatro Bravo.



Nathan Dobson (*Chester*) is excited to be returning to Childsplay for his second season after making his company debut as Sheldon in *Junie B. in Jingle Bells, Batman Smells!* and performing in the Arizona tour of *The Imaginators* as Tim. Nathan attended the American Musical and Dramatic Academy in New York City before returning to the valley to work with the wonderful artists in his home state. Outside of Childsplay, some of his favorite rolls have included Solomon in *Speech and Debate* and The Telegram Delivery Boy in *Octopus*, both at Stray Cat Theatre.

Jon Gentry (*Wilson*) is an Associate Artist with Childsplay and has been a full time member of the acting company since 1982. In the 2008\09 season he appeared in *Rock Paper Scissors*. In 2010, Jon spent 6 months in Europe rehearsing and performing *Steen, Papier, Schaar* (also known as Rock, Paper, Scissors, the new Dutch production) with Speel Theater throughout the Netherlands and Belgium. He appeared last season in *Go, Dog. Go!* and *The Borrowers*. Favorite Childsplay shows include: Toad in *A Year with Frog and Toad* and Benjamin in *The Yellow Boat*. In Phoenix, he has been seen as Max Bialystock in *The Producers*, Tupolski in *The Pillowman*, Roy Cohn in *Angels in America, Parts One and Two*. He also appeared in *Blue Orange*, *Compleat Wrks of Shspr (Abridged)* and *A Funny Thing Happened on the Way to the Forum*. Directing credits include; *In My Grandmother's Purse*, *Stones In His Pockets*, *Belle Of Amherst*, *Rhubarb Jam*, *The Imaginators* (original production), and *Equus*. He has performed with Speel Theater of Holland, Actors Theatre of Phoenix, Phoenix Theatre, Mill Mountain Theatre, Seattle Children's Theatre, PCPA Theatre Fest, Southwest Shakespeare and Arizona Jewish Theatre. In October of 2008 he was awarded a Lunt-Fontanne Fellowship by the Ten Chimneys Foundation as one of 10 actors in the United States to participate in the Inaugural Lunt-Fontanne Fellowship Program, with Lynn Redgrave as Master Teacher.



Kate Haas (*Garland*) is thrilled to return for her 5th season as an actor and teaching artist with Childsplay, where she was last seen as Anne in *The Imaginators*. Previous roles include: Isabella in *Androcles and the Lion*, The Good Fairy (and others) in *The Neverending Story*, Phoebe in *Miss Nelson is Missing!*, Mother/Grandmother in *A Thousand Cranes*, Miss Pross in *A Tale of Two Cities*, and Mother/Audrey in *Alexander and the Terrible, Horrible, No Good, Very Bad Day*. Other favorite roles include: Steph in *reasons to be pretty* and Jill in *Learn to Be Latina* (Stray Cat Theatre), Olive/Agnes in *Times Square Angel* (Nearly Naked Theatre), and Judith in *The Ash Girl* (Arizona State University). Kate studies at the Megaw Actors Studio and holds a BA in Theatre from Arizona State University.



Yolanda London (*Lilly*) is thrilled to be back onstage for her ninth season with Childsplay. She was last seen in the Black Theatre Troupe's production of *Lady Day at Emerson's Bar and Grill*. Some of her favorite roles with Childsplay: Turtle in *A Year With Frog and Toad*, Cochina in *Ferdinand The Bull*, Bird Girl/Mrs. Mayor in *Seussical*, and Petite in *Petite Rouge*. She has also been seen onstage with the Actors Company of PA, the Smithsonian Institute's Discovery Theatre, and locally, with Actor's Theatre, Phoenix Theatre and the Phoenix Metropolitan Opera Company.

Dwayne Hartford (*Father*) first joined the company as an actor in 1990. Some of his favorite company roles are: Toad in *A Year With Frog & Toad*, Father in *The Yellow Boat*, the BFG in *The Big Friendly Giant*, the Moon in *Pero or the Mystery of the Night*, and Joseph in *Wolf Child: The Correction of Joseph*. Dwayne's plays *Eric and Elliot* (2005 AATE Distinguished Play Award winner), *The Imaginators*, and *A Tale of Two Cities* have been produced by Childsplay and published by Dramatic Publishing. His play *A Little Bit of Water* toured schools for two seasons. A regular director for Childsplay, he directed *Honus and Me*, *Busytown*, *Miss Nelson is Missing!*, *Seussical*, *Junie B. Jones* and *A Little Monkey Business* and *Petite Rouge*. Originally from Maine, he received his BFA from Boston Conservatory. Dwayne is a Childsplay Associate Artist and Playwright in Residence.



Debra K. Stevens (*Mom*) is an Associate Artist who has been with Childsplay since 1982, and was seen last season on the Childsplay stage as Homily in *The Borrowers*, the Green Dog in *Go Dog, Go!* and May in *Junie B. Jones: Jingle Bells Batman Smells*. Other favorite roles include: Lucy Wainwright in *Getting Near to Baby*, Mme. Defarge in *A Tale of Two Cities*, Charlotte in *Charlotte's Web*, Stacy in *Lost and Foundling*, Nurse and other roles in *Romeo and Juliet*, Annabelle in *Still Life With Iris*, Joy in *The Yellow Boat*, Helen Keller in *The Miracle Worker*, and Emily Dickinson in *The Belle of Amherst*. Other roles for theatres outside of Childsplay include Essie in *You Can't Take It With You* for Phoenix Theatre. For Actors Theatre she portrayed Nat in *Rabbit Hole*, Sister Woman in *Cat on a Hot Tin Roof*, Maya in *The Archbishop's Ceiling*, and Karen in *Dinner with Friends*. Last season, she directed *The Crucible* for Mesa Community College and this year she will direct MCC's *Wiley and the Hairy Man* for a limited school tour. This year, Debra can also be found on the Actors' Theatre stage portraying Arlene in their production of *Next Fall*. She also works extensively in classrooms around the state as an Artist-in-Education. Debra received a BA in Speech and Theatre from Western Kentucky University and a Master's in Theatre from ASU.

D. Scott Withers (*Mr. Slinger*) has been a member of the Childsplay acting company since 1989. Last season Scott appeared in *A Year with Frog and Toad* and *Go, Dog, Go!* for Childsplay, performed in *Footloose* for Arizona Broadway Theatre and *Hairspray* for Phoenix Theatre and Arkansas Rep and directed *The Wiz* for Greasepaint Youththeatre. Other favorite roles at Childsplay: *Seussical*, *Petite Rouge*, *A Tale of Two Cities*, *The Yellow Boat*, *Eric and Elliot*, *Schoolhouse Rock Live!*, *Wiley and the Hairy Man*, *Still Life With Iris* and *The Wind in the Willows*. Other performance credits: *Baby*, *Gypsy* and *Bye, Bye Birdie* (Arizona Broadway Theatre), *A Year with Frog and Toad* (Seattle Children's Theatre); *Company*, *Forum* and *Into the Woods* (Phoenix Theatre); *A Christmas Carol* (Actors Theatre); *Pageant* (Howgood Productions); and *The Jungle Book* (Fulton Opera House). Directing credits include: *Androcles and the Lion* and *Alexander and The Terrible, Horrible, No Good, Very Bad Day* at Childsplay, *The Women* at Phoenix Theatre, *The Crucible*, *Into the Woods*, *Victor/Victoria*, *Snoopy!!!*, *Annie Get Your Gun*, *Footloose* and *Once On This Island* at Stagebrush, *Jeffrey* at IMCO, *The Life* at Black Theatre Troupe, *Meet Me In St. Louis* at the Sun Dome and *The Selfish Giant* and *Christmas in the Land of Oz* at Arizona Broadway Theatre. He served as Artistic Director for Greasepaint Youththeatre where he directed *Rent: School Edition* and *Pippin* and was the founding managing director for In Mixed Company. Scott is originally from Idaho and holds a BFA in Theatre Performance from ASU.

